



AirCard Watcher Release Notes

Release R11.3.1204.0

Build 3428

© 2011 - 2012 Sierra Wireless, Inc.

This document contains information which is proprietary and confidential to Sierra Wireless, Inc. Disclosure to persons other than the officers, employees, agents, or subcontractors of the Company or licensee of this document without the prior written permission of Sierra Wireless, Inc. is strictly prohibited.

Document #:		Revision:	11.3.1204.0	Page 2 of 29
-------------	--	-----------	-------------	--------------

Table of Contents

1	General.....	3
1.1	Purpose.....	3
1.2	General.....	3
1.3	Installing or upgrading AirCard Watcher.....	3
1.4	Summary of Revision History.....	4
2	Revision History	5
2.1	Build 3428 – AirCard Watcher	5
2.2	Build 3380 – AirCard Watcher	6
2.3	Build 3360 – AirCard Watcher	7
2.4	Build 3270 – AirCard Watcher	8
2.5	Build 3269 – AirCard Watcher	9
2.6	Build 3163 – AirCard Watcher	10
2.7	Build 3138 – AirCard Watcher	11
2.8	Build 3063 – AirCard Watcher	12
2.9	Build 3006 – AirCard Watcher	13
2.10	Build 3004 – AirCard Watcher	14
2.11	Build 2990 – AirCard Watcher	15
2.12	Build 2968 – AirCard Watcher	16
2.13	Build 2934 – AirCard Watcher	17
2.14	Build 2849 – AirCard Watcher	18
2.15	Build 2808 – AirCard Watcher	19
2.16	Build 2774 – AirCard Watcher	20
2.17	Build 2750 – AirCard Watcher	21
2.18	Build 2612 – AirCard Watcher	22
2.19	Build 2586 – AirCard Watcher	23
2.20	Build 2584 – AirCard Watcher	24
2.21	Build 2579 – 3G Watcher.....	25
2.22	Build 2367 – 3G Watcher.....	28

Document #:		Revision:	11.3.1204.0	Page 3 of 29
-------------	--	-----------	-------------	--------------

1 General

1.1 Purpose

This document is intended to capture technical changes to the AirCard Watcher software release package.

These release notes are NOT intended for the end user.

A new revision of this document will be issued when any of the components of the AirCard Watcher product are updated.

1.2 General

The Build number is a Sierra Wireless assigned number that uniquely identifies all external releases of software and firmware. It is not specific to a product or software revision. It is an internal reference only.

1.3 Installing or upgrading AirCard Watcher

- If you have a previous version of AirCard Watcher you should uninstall it first:
 - o Go to Control Panel and select “Add or Remove Programs”
 - o Select “Sierra Wireless AirCard Watcher” and click on “Uninstall”
- Launch the Watcher installation package and follow the onscreen installation instructions.

SIERRA WIRELESS, INC.

Document #:		Revision:	11.3.1204.0	Page 4 of 29
-------------	--	-----------	-------------	--------------

1.4 Summary of Revision History

Revision	Date	Author	Build
11.3.1202.0	April 17, 2012	Pauline Yao	Build 3428
11.3.1202.0	February 24, 2012	Pauline Yao	Build 3380
11.3.1201.0	February 13, 2012	Pauline Yao	Build 3360
11.3.1111.1	November 16, 2011	Pauline Yao	Build 3270
11.3.1111.0	November 3, 2011	Pauline Yao	Build 3269
11.3.1108.2	August 22, 2011	Pauline Yao	Build 3163
11.3.1107.2	July 22, 2011	Pauline Yao	Build 3138
11.3.1105.1	May 27, 2011	Tammy Nekouasl	Build 3063
11.3.1104.0	April 20, 2011	Tammy Nekouasl	Build 3006
11.3.1104.1	April 27, 2011	Colin Chow	Build 3004
11.3.1103.1	April 13, 2011	Pauline Yao	Build 2990
11.3.1103.1	March 23, 2011	Pauline Yao	Build 2968
10.11.0.1	February 24, 2011	Tong Shen	Build 2934
10.11.0.0	December 24, 2010	Colin Chow	Build 2849
10.11.0.0	November 9, 2010	Tong Shen	Build 2808
10.10.0.0	October 15, 2010	Tong Shen	Build 2774
10.9.0.0	September 21, 2010	Tong Shen	Build 2750
10.0.0.15	June 18, 2010	Pauline Yao	Build 2612
10.0.0.14	May 12, 2010	Pauline Yao	Build 2586
10.0.0.13	May 6, 2010	Pauline Yao	Build 2584
10.0.0.12	April 30, 2010	Mohsen Jalali	Build 2579
3.1.0.55	November 02, 2009	Pauline Yao, Iulian Mocanu	Build 2367

[Changes between this version and the previous one are highlighted in blue.](#)

Document #:		Revision:	11.3.1204.0	Page 5 of 29
-------------	--	-----------	-------------	--------------

2 Revision History

2.1 Build 3428 – AirCard Watcher

Component		Revision
Watcher Main Application	Watcher.exe	11.3.1204.0
SDK MSM	SierraWirelessSDK.MSM	Build 3422
Watcher Helper Application	WaHelper.exe	11.3.1108.0
Driver Installer – USB Generic	Build	Build 3390
MSI Installer	Watcher_Generic.msi	6.0.3428.0003
Watcher Predefined Profiles	Predefined_Profiles.xml	1.72
TRU-Install Application	TRU-Install.exe	3.0.1.1
Web Updater Merge Module	TRU_Updater.msm	Build 3281
GPS Monitor Application	GpsApp.exe	11.2.1204.0

2.1.1 Watcher Application

- [B41680] Assign Default Gateway for Mobile Broadband connections
- [B41032] Watcher UI is inconsistent with Win 7 native UI when connecting through Watcher
- [B41701] Updated French User Guide

2.1.2 Device Drivers

- [B31070] Device Driver installation incomplete if the “Found New Hardware Wizard” is running
- [B39791] Updated default TCP Receiving Window size for LTE devices

SIERRA WIRELESS, INC.

Document #:		Revision:	11.3.1204.0	Page 6 of 29
-------------	--	-----------	-------------	--------------

2.2 Build 3380 – AirCard Watcher

Component		Revision
Watcher Main Application	Watcher.exe	11.3.1202.0
SDK MSM	SierraWirelessSDK.MSM	Build 3382
Watcher Helper Application	WaHelper.exe	11.3.1108.0
Driver Installer – USB Generic	Build	Build 3066
MSI Installer	Watcher_Generic.msi	6.0.3380.0001
Watcher Predefined Profiles	Predefined_Profiles.xml	1.72
TRU-Install Application	TRU-Install.exe	3.0.1.1
Web Updater Merge Module	TRU Updater.msm	Build 3281
GPS Monitor Application	GpsApp.exe	11.2.1111.0

2.2.1 Watcher Application

- [B40579] Exposed one editable profile for LTE products
- [B38268] Resolved rare SwiApiMuxX.exe crashes on suspend/resume

SIERRA WIRELESS, INC.

Document #:		Revision:	11.3.1204.0	Page 7 of 29
-------------	--	-----------	-------------	--------------

2.3 Build 3360 – AirCard Watcher

Component		Revision
Watcher Main Application	Watcher.exe	11.3.1201.0
SDK MSM	SierraWirelessSDK.MSM	Build 3362
Watcher Helper Application	WaHelper.exe	11.3.1108.0
Driver Installer – USB Generic	Build	Build 3066
MSI Installer	Watcher_Generic.msi	6.0.3360.0005
Watcher Predefined Profiles	Predefined_Profiles.xml	1.72
TRU-Install Application	TRU-Install.exe	3.0.1.1
Web Updater Merge Module	TRU Updater.msm	Build 3181
GPS Monitor Application	GpsApp.exe	11.2.1111.0

2.3.1 Watcher Application

- [B39782] Support prompt for password feature for LTE products
- [B38868] Watcher installer to launch Driver installer without –ndis620 option

SIERRA WIRELESS, INC.

Document #:		Revision:	11.3.1204.0	Page 8 of 29
-------------	--	-----------	-------------	--------------

2.4 Build 3270 – AirCard Watcher

Component		Revision
Watcher Main Application	Watcher.exe	11.3.1111.1
SDK MSM	SierraWirelessSDK.MSM	Build 3292
Watcher Helper Application	WaHelper.exe	11.3.1108.0
Driver Installer – USB Generic	Build	Build 3066
MSI Installer	Watcher_Generic.msi	6.0.3270.0001
Watcher Predefined Profiles	Predefined_Profiles.xml	1.72
TRU-Install Application	TRU-Install.exe	3.0.1.1
Web Updater Merge Module	TRU Updater.msm	Build 3181
GPS Monitor Application	GpsApp.exe	11.2.1111.0

2.4.1 Watcher Application

- [B38268] Rare SwiApiMuxX.exe crashes on suspend/resume
- [B38193] Request Generic Watcher to allow Private APN without need for an implicit license

SIERRA WIRELESS, INC.

Document #:		Revision:	11.3.1204.0	Page 9 of 29
-------------	--	-----------	-------------	--------------

2.5 Build 3269 – AirCard Watcher

Component		Revision
Watcher Main Application	Watcher.exe	11.3.1111.0
SDK MSM	SierraWirelessSDK.MSM	Build 3278
Watcher Helper Application	WaHelper.exe	11.3.1108.0
Driver Installer – USB Generic	Build	Build 3066
MSI Installer	Watcher_Generic.msi	6.0.3269.0003
Watcher Predefined Profiles	Predefined_Profiles.xml	1.72
TRU-Install Application	TRU-Install.exe	3.0.1.1
Web Updater Merge Module	TRU_Updater.msm	Build 3181
GPS Monitor Application	GpsApp.exe	11.2.1111.0

2.5.1 Watcher Application

- [B37152] Dynamic/Operator specific Network Service Indicator
- [B34232] Added IPv6 support in Watcher
- [B36688] Watcher crashes when closing with SMS save prompt open
- [B36839] Watcher crashes when enabling/disabling MB
- [B36867] TRU-Updater crashes on checking updates
- [B37936] Default profile does not switch when switching SIMs
- [B37935] When MB is enabled, SIM associated profile is not created automatically after Watcher restarts
- [B23415] Watcher does not detect device after enabling/disabling Win7 MB
- [B36436] Controlling Windows Server Update Services

SIERRA WIRELESS, INC.

Document #:		Revision:	11.3.1204.0	Page 10 of 29
-------------	--	-----------	-------------	---------------

2.6 Build 3163 – AirCard Watcher

Component		Revision
Watcher Main Application	Watcher.exe	11.3.1108.2
SDK MSM	SierraWirelessSDK.MSM	Build 3201
Watcher Helper Application	WaHelper.exe	11.3.1108.0
Driver Installer – USB Generic	Build	Build 3066
MSI Installer	Watcher_Telstra.msi	6.0.3163.0005
Watcher Predefined Profiles	Predefined_Profiles.xml	1.60
TRU-Install Application	TRU-Install.exe	3.0.1.1
Web Updater Merge Module	TRU_Updater.msm	Build 3180
GPS Monitor Application	GpsApp.exe	11.2.1108.0

2.6.1 Watcher Application

- [B35435] ACM and Watcher existence improvements

Document #:		Revision:	11.3.1204.0	Page 11 of 29
-------------	--	-----------	-------------	---------------

2.7 Build 3138 – AirCard Watcher

Component		Revision
Watcher Main Application	Watcher.exe	11.3.1107.2
SDK MSM	SierraWirelessSDK.MSM	Build 3139
Watcher Helper Application	WaHelper.exe	11.3.1105.0
Driver Installer – USB Generic	Build	Build 3066
MSI Installer	Watcher_Telstra.msi	6.0.3138.0004
Watcher Predefined Profiles	Predefined_Profiles.xml	1.60
TRU-Install Application	TRU-Install.exe	3.0.1.1
Web Updater Merge Module	TRU Updater.msm	Build 3137
GPS Monitor Application	GpsApp.exe	11.2.1107.0

2.7.1 Watcher Application

- [B33541] Updated Network Service Indicator (2G/3G/4G)
- [B33358] LTE Manual Network support
- [B34201] FF-CatC-Dev: Limit the number of available profiles
- [B34104] CM/Watcher displays error messages when invalid APNs are used
- [B33863] Update SATW for 320U SIM insertion
- [B34773] Signal bar display not updated (RSRP and RSRQ displayed in 3G) if UE falls back to 3G or “3G-All” selected
- [B8929] MTU size configurable using Watcher.XML
- [B33487] RSSI bars mapping based on LTE signal quality indicators
- [B33708] Unable to make data connection after hibernate/resume
- [B33405] Airplane mode shortcut should be hidden if USB modems are detected
- [B33317] SMS Customization based on firmware setting
- [B33178] Display advanced session measurements in Call History
- [B34330] Some Advanced Call History Stats available for regular users
- [B33330] [Call History] Some Data Sessions listed twice
- [B32677] [Call History] Potential loss of all data session entries
- [B34688] Initial check for updates not working
- [B34822] Retry failed check for updates daily
- [B34869] Option text under "Windows Update" in General page should have "4G"
- [B35067] Remove SmartCard Reader option
- [B35066] Reorganize items in Help->About
- [B34985] Added Troubleshooting document for new products
- [B34813] Configurable histogram parameters

2.7.2 Device Drivers

- Default value for MTU Size in Windows 7 is now 1430

Document #:		Revision:	11.3.1204.0	Page 12 of 29
-------------	--	-----------	-------------	---------------

2.8 Build 3063 – AirCard Watcher

Component		Revision
Watcher Main Application	Watcher.exe	11.3.1105.1
SDK MSM	SierraWirelessSDK.MSM	Build 3062
Watcher Helper Application	WaHelper.exe	11.3.1102.1
Driver Installer – USB Generic	Build	Build 3046
MSI Installer	Watcher_Telstra.msi	6.0.3063.0002
Watcher Predefined Profiles	Predefined_Profiles.xml	1.56
TRU-Install	Build	Build 2851
TRU-Install Application	TRU-Install.exe	3.0.1.0
Web Updater Merge Module	TRU_Updater.msm	Build 3055
GPS Monitor Application	GpsApp.exe	11.2.1105.1

2.8.1 Known issues

2.8.2 Watcher Application

- [B31099] Disabling Windows Automatic Check for Updates during driver installation in Windows7
- [B32752] Error message about SWI MUX popup after resume laptop
- [B33165] Watcher crashes after attempt to connect to LTE network
- [B33172] Watcher crash while disconnecting from 3G network

Document #:		Revision:	11.3.1204.0	Page 13 of 29
-------------	--	-----------	-------------	---------------

2.9 Build 3006 – AirCard Watcher

Component		Revision
Watcher Main Application	Watcher.exe	11.3.1104.0
SDK MSM	SierraWirelessSDK.MSM	Build 2991
Watcher Helper Application	WaHelper.exe	11.3.1102.1
Driver Installer – USB Generic	Build	Build 2635
MSI Installer	Watcher_Telstra.msi	6.0.3006.0001
Watcher Predefined Profiles	Predefined_Profiles.xml	1.56
TRU-Install	Build	Build 2851
TRU-Install Application	TRU-Install.exe	3.0.1.0
Web Updater Merge Module	TRU_Updater.msm	Build 3005
GPS Monitor Application	GpsApp.exe	11.2.1103.0

2.9.1 Known issues

- [B28585] Autolaunch of 3rd Party Applications upon data connection doesn't work on Win7 when mobile broadband is enabled

2.9.2 Watcher Application

- [B31896] Firmware Web Update is not shown after upgrading Watcher

Document #:		Revision:	11.3.1204.0	Page 14 of 29
-------------	--	-----------	-------------	---------------

2.10 Build 3004 – AirCard Watcher

Component		Revision
Watcher Main Application	Watcher.exe	11.3.1104.1
API Interface	SwiApiInterfaceX.dll	11.3.1104.0
API MUX	SwiApiMuxX.exe	11.3.1104.0
Card Detect Service	SwiCardDetect.exe	11.3.1104.0
Card Detect	SwiCardDetectX.dll	11.3.1104.0
Watcher Helper Application	WaHelper.exe	11.3.1102.1
Driver Installer – USB Enterprise	Build	Build 2987
Driver Installer – USB Generic	DriverInstaller*.exe	1.0.25.0
MSI Installer	*.msi	6.0.3004.3
Watcher Predefined Profiles	Predefined_Profiles.xml	1.60
TRU-Install	Build	Build 2851
TRU-Install Application	TRU-Install.exe	3.0.1.0
Web Updater Merge Module	*.msm	Build 3005
Web Updater Application	TRUUpdater.exe	11.1.1104.0

2.10.1 Watcher Application

- [Consumer Watcher Licensing – Commercial Launch](#)
- [Includes latest WebUpdater addressing Firmware update support](#)

Document #:		Revision:	11.3.1204.0	Page 15 of 29
-------------	--	-----------	-------------	---------------

2.11 Build 2990 – AirCard Watcher

Component		Revision
Watcher Main Application	Watcher.exe	11.3.1104.0
API Interface	SwiApiInterfaceX.dll	11.3.1104.0
API MUX	SwiApiMuxX.exe	11.3.1104.0
Card Detect Service	SwiCardDetect.exe	11.3.1104.0
Card Detect	SwiCardDetectX.dll	11.3.1104.0
Watcher Helper Application	WaHelper.exe	11.3.1102.1
Driver Installer – USB Enterprise	Build	Build 2987
Driver Installer – USB Generic	DriverInstaller*.exe	1.0.25.0
MSI Installer	*.msi	6.0.2990.x
Watcher Predefined Profiles	Predefined_Profiles.xml	1.60
TRU-Install	Build	Build 2851
TRU-Install Application	TRU-Install.exe	3.0.1.0
Web Updater Merge Module	*.msm	Build 2973
Web Updater Application	TRUUpdater.exe	11.1.1103.1

2.11.1 Watcher Application

- [B30552](#): Assisted GPS profiles are now hidden in Watcher

2.11.2 Known issues

- [B31609](#), [B31640](#): Watcher crashes with pay-per-use devices
- [B31631](#): 4G icon array - HSDPA and HSPA states mixed up
- [B31896](#) Firmware updates not displaying

SIERRA WIRELESS, INC.

Document #:		Revision:	11.3.1204.0	Page 16 of 29
-------------	--	-----------	-------------	---------------

2.12 Build 2968 – AirCard Watcher

Component		Revision
Watcher Main Application	Watcher.exe	11.3.1103.1
API Interface	SwiApiInterfaceX.dll	11.3.1103.2
API MUX	SwiApiMuxX.exe	11.3.1103.2
Card Detect Service	SwiCardDetect.exe	11.3.1103.3
Card Detect	SwiCardDetectX.dll	11.3.1103.3
Watcher Helper Application	WaHelper.exe	11.3.1102.1
Driver Installer – USB Enterprise	Build	Build 2820
Driver Installer – USB Generic	DriverInstaller*.exe	1.0.20.0
MSI Installer	*.msi	6.0.2968.x
Watcher Predefined Profiles	Predefined_Profiles.xml	1.56
TRU-Install	Build	Build 2851
TRU-Install Application	TRU-Install.exe	3.0.1.0
Web Updater Merge Module	*.msm	Build 2973
Web Updater Application	TRUUpdater.exe	11.1.1103.1

2.12.1 Watcher Application

- [B27042](#): USB Lightning – Watcher B2612 stops working
- [B22285](#): IPv6 support
- [B19619](#): Watcher UI improvements: .png and alpha blending support

SIERRA WIRELESS, INC.

Document #:		Revision:	11.3.1204.0	Page 17 of 29
-------------	--	-----------	-------------	---------------

2.13 Build 2934 – AirCard Watcher

Component		Revision
Watcher Main Application	Watcher.exe	10.11.0.1
API Interface	SwiApiInterfaceX.dll	11.1.0.0
API MUX	SwiApiMuxX.exe	11.1.0.0
Card Detect Service	SwiCardDetect.exe	11.1.0.1
Card Detect	SwiCardDetectX.dll	11.1.0.1
Watcher Helper Application	WaHelper.exe	11.1.0.0
Driver Installer – USB Enterprise	Build	Build 2811
Driver Installer – USB Generic	DriverInstaller*.exe	1.0.20.0
MSI Installer	*.msi	6.0.2934.x
Watcher Predefined Profiles	Predefined_Profiles.xml	1.56
TRU-Install	Build	Build 2851
TRU-Install Application	TRU-Install.exe	3.0.1.0
Web Updater Merge Module	*.msm	Build 2862
Web Updater Application	TRUUpdater.exe	10.9.0.1

2.13.1 Watcher Application

- [B29964](#): Consumer Watcher - Interim timebomb extension (from March 8 to April 30)

Document #:		Revision:	11.3.1204.0	Page 18 of 29
-------------	--	-----------	-------------	---------------

2.14 Build 2849 – AirCard Watcher

Component		Revision
Watcher Main Application	Watcher.exe	10.11.0.0
API Interface	SwiApiInterfaceX.dll	10.12.0.0
API MUX	SwiApiMuxX.exe	10.12.0.0
Card Detect Service	SwiCardDetect.exe	10.12.0.0
Card Detect	SwiCardDetectX.dll	10.12.0.0
Watcher Helper Application	WaHelper.exe	10.9.0.0
Driver Installer – USB Generic	Build	Build 2820
Driver Installer – USB Generic	DriverInstaller*.exe	1.0.20.0
MSI Installer	*.msi	6.0.2849.1
Watcher Predefined Profiles	Predefined_Profiles.xml	1.56
TRU-Install	Build	
TRU-Install Application	TRU-Install.exe	
Web Updater Merge Module	*.msm	Build 2789
Web Updater Application	TRUUpdater.exe	10.9.0.1

2.14.1 Watcher Application

- [BZ 25576](#): Watcher crash when is UE reset
- [BZ 27145](#): Watcher crashes upon device removal
- [BZ 27056](#): Watcher crashes after radio on/off
- [BZ 22785](#): Watcher application crashes after Disable Airplane mode then Suspend

SIERRA WIRELESS, INC.

Document #:		Revision:	11.3.1204.0	Page 19 of 29
-------------	--	-----------	-------------	---------------

2.15 Build 2808 – AirCard Watcher

Component		Revision
Watcher Main Application	Watcher.exe	10.11.0.0
API Interface	SwiApiInterfaceX.dll	10.10.0.1
API MUX	SwiApiMuxX.exe	10.10.0.1
Card Detect Service	SwiCardDetect.exe	10.10.0.1
Card Detect	SwiCardDetectX.dll	10.10.0.1
Watcher Helper Application	WaHelper.exe	10.9.0.0
Driver Installer – USB Generic	Build	Build 2767
Driver Installer – USB Generic	DriverInstaller*.exe	1.0.19.0
MSI Installer	*.msi	6.0.2808.x
Watcher Predefined Profiles	Predefined_Profiles.xml	1.56
TRU-Install	Build	Build 2657
TRU-Install Application	TRU-Install.exe	3.0.0.0
Web Updater Merge Module	*.msm	Build 2789
Web Updater Application	TRUUpdater.exe	10.9.0.1

2.15.1 Watcher Application

- [B26409](#): Watcher Licensing – Added license scheme / trial mode for USB 308 with new VID/PID
- [B26762](#): New EULA for Enterprise and Consumer Watcher

SIERRA WIRELESS, INC.

Document #:		Revision:	11.3.1204.0	Page 20 of 29
-------------	--	-----------	-------------	---------------

2.16 Build 2774 – AirCard Watcher

Component		Revision
Watcher Main Application	Watcher.exe	10.10.0.0
API Interface	SwiApiInterfaceX.dll	10.10.0.0
API MUX	SwiApiMuxX.exe	10.10.0.0
Card Detect Service	SwiCardDetect.exe	10.10.0.0
Card Detect	SwiCardDetectX.dll	10.10.0.0
Watcher Helper Application	WaHelper.exe	10.9.0.0
Driver Installer – USB Generic	Build	Build 2767
Driver Installer – USB Generic	DriverInstaller*.exe	1.0.19.0
MSI Installer	*.msi	6.0.2774.x
Watcher Predefined Profiles	Predefined_Profiles.xml	1.56
TRU-Install	Build	Build 2657
TRU-Install Application	TRU-Install.exe	3.0.0.0
Web Updater Merge Module	*.msm	Build 2789
Web Updater Application	TRUUpdater.exe	10.9.0.1

2.16.1 Watcher Application

- [B25435](#): Addressed support for legacy devices (non-directip))
- Trial support for new devices using new VID (e.g. AT&T USB 308). Includes latest AirCard Updates with background download and critical update support

Document #:		Revision:	11.3.1204.0	Page 21 of 29
-------------	--	-----------	-------------	---------------

2.17 Build 2750 – AirCard Watcher

Component		Revision
Watcher Main Application	Watcher.exe	10.9.0.0
API Interface	SwiApiInterfaceX.dll	10.9.0.0
API MUX	SwiApiMuxX.exe	10.9.0.0
Card Detect Service	SwiCardDetect.exe	10.9.0.2
Card Detect	SwiCardDetectX.dll	10.9.0.2
Watcher Helper Application	WaHelper.exe	10.9.0.0
Driver Installer – USB Generic	Build	Build 2767
Driver Installer – USB Generic	DriverInstaller*.exe	1.0.19.0
MSI Installer	*.msi	6.0.2750.x
Watcher Predefined Profiles	Predefined_Profiles.xml	1.56
TRU-Install	Build	Build 2657
TRU-Install Application	TRU-Install.exe	3.0.0.0
Web Updater Merge Module	*.msm	Build 2736
Web Updater Application	TRUUpdater.exe	10.9.0.0

2.17.1 Watcher Application

- [BZ 24669](#): Change of default Watcher exit setting to "no warning"
- [BZ 21031](#): Background/auto download
- [BZ 15289](#): Support for critical updates
- [BZ 16793](#): Task tray icon notification for new updates
- [BZ 14542](#): Display warning to user when dl'ing over poor/costly connections
- [BZ 21431](#): Encrypt all fields in .cfg file
- [BZ 23033](#): Report standalone GPS install versions
- [BZ 23942](#): Host ID (Mac address) fix
- [BZ 24846](#): [AT&T] USB308 Watcher time bomb

SIERRA WIRELESS, INC.

Document #:		Revision:	11.3.1204.0	Page 22 of 29
-------------	--	-----------	-------------	---------------

2.18 Build 2612 – AirCard Watcher

Component		Revision
Watcher Main Application	Watcher.exe	10.0.0.15
API Interface	SwiApiInterfaceX.dll	10.0.0.14
API MUX	SwiApiMuxX.exe	10.0.0.14
Card Detect Service	SwiCardDetect.exe	10.0.0.21
Card Detect	SwiCardDetectX.dll	10.0.0.18
Watcher Helper Application	WaHelper.exe	10.0.0.7
Driver Installer – USB Generic	Build	Build 2596
Driver Installer – USB Generic	DriverInstaller*.exe	1.0.15.0
MSI Installer	*.msi	6.0.2612.x
Watcher Predefined Profiles	Predefined_Profiles.xml	1.54
TRU-Install	Build	Build 2568
TRU-Install Application	TRU-Install.exe	2.2.0.3
Web Updater Merge Module	*.msm	Build 2613
Web Updater Application	TRUUpdater.exe	10.0.2.1

2.18.1 Watcher Application

- [BZ 22539](#): TCP Window Size optimization for DC/LTE products
- [BZ 22974](#): DC-HSPA+ and LTE icon service indications
- [BZ 22849](#): C888 not detected when removing device after suspend
- [BZ 22996](#): Watcher displays connecting when switching airplane mode off (AC860)

Document #:		Revision:	11.3.1204.0	Page 23 of 29
-------------	--	-----------	-------------	---------------

2.19 Build 2586 – AirCard Watcher

Component		Revision
Watcher Main Application	Watcher.exe	10.0.0.14
API Interface	SwiApiInterfaceX.dll	10.0.0.11
API MUX	SwiApiMuxX.exe	10.0.0.11
Card Detect Service	SwiCardDetect.exe	10.0.0.19
Card Detect	SwiCardDetectX.dll	10.0.0.18
Watcher Helper Application	WaHelper.exe	10.0.0.7
Driver Installer – USB Generic	Build	Build 2596
Driver Installer – USB Generic	DriverInstaller*.exe	1.0.15.0
MSI Installer	*.msi	6.0.2586.x
Watcher Predefined Profiles	Predefined_Profiles.xml	1.54
TRU-Install	Build	Build 2568
TRU-Install Application	TRU-Install.exe	2.2.0.3
Web Updater Merge Module	*.msm	Build 2589
Web Updater Application	TRUUpdater.exe	10.0.2.0

2.19.1 Watcher Application

- [BZ 21328](#): FF-CatC-Eval: [AT&T] APN change
- [BZ 22546](#): Watcher cannot set alternate profile on USB305
- [BZ 22611](#): Restore profiles is broken with USB305 only
- [BZ 22600](#): FW Updates not available for direct IP devices (newer than USB 306)

2.19.2 Installer

- [BZ 21865](#): 'The setup must update files' message pops during Watcher uninstall

Document #:		Revision:	11.3.1204.0	Page 24 of 29
-------------	--	-----------	-------------	---------------

2.20 Build 2584 – AirCard Watcher

Component		Revision
Watcher Main Application	Watcher.exe	10.0.0.13
API Interface	SwiApiInterfaceX.dll	10.0.0.11
API MUX	SwiApiMuxX.exe	10.0.0.11
Card Detect Service	SwiCardDetect.exe	10.0.0.18
Card Detect	SwiCardDetectX.dll	10.0.0.18
Watcher Helper Application	WaHelper.exe	10.0.0.6
Driver Installer – USB Generic	Build	Build 2514
Driver Installer – USB Generic	DriverInstaller*.exe	1.0.14.0
MSI Installer	*.msi	6.0.2584.0002
Watcher Predefined Profiles	Predefined_Profiles.xml	1.54
TRU-Install	Build	Build 2568
TRU-Install Application	TRU-Install.exe	2.2.0.3
Web Updater Merge Module	*.msm	Build 2562
Web Updater Application	TRUUpdater.exe	10.0.1.3

2.20.1 Known Issues

- [Low] [BZ 22102](#) Files in use dialog pops when upgrading Watcher

2.20.2 Watcher Application/components changes

- [Medium] [BZ 22532](#) Speed graph does not show data on XP
- [Low] [BZ 22514](#): Throughput speed indicator missing in Watcher UI
- [Low] [BZ 22510](#): Watcher fails to detect device in mass storage mode on Win7
- [Low] [BZ 22488](#): Watcher fails to repair IP bindings

Document #:		Revision:	11.3.1204.0	Page 25 of 29
-------------	--	-----------	-------------	---------------

2.21 Build 2579 – 3G Watcher

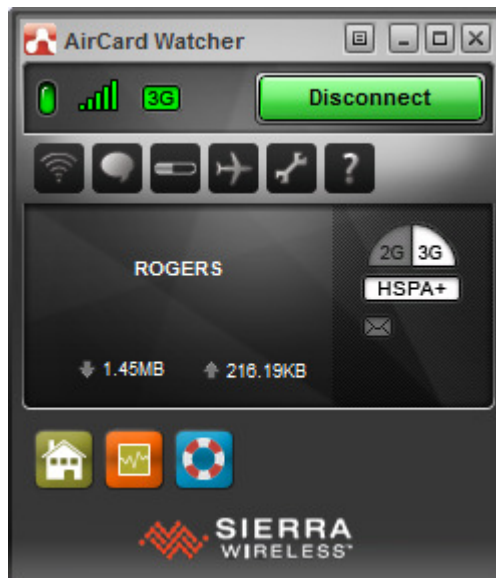
Component		Revision
Watcher Main Application	Watcher.exe	10.0.0.12
API Interface	SwiApiInterfaceX.dll	10.0.0.11
API MUX	SwiApiMuxX.exe	10.0.0.11
Card Detect Service	SwiCardDetect.exe	10.0.0.17
Card Detect	SwiCardDetectX.dll	10.0.0.17
Watcher Helper Application	WaHelper.exe	10.0.0.6
Driver Installer – USB Generic	Build	Build 2514
Driver Installer – USB Generic	DriverInstaller*.exe	1.0.14.0
MSI Installer	*.msi	6.0.2579.0004
Watcher Predefined Profiles	Predefined_Profiles.xml	1.54
TRU-Install	Build	Build 2438
TRU-Install Application	TRU-Install.exe	2.2.0.2
Web Updater Merge Module	*.msm	Build 2562
Web Updater Application	TRUUpdater.exe	10.0.1.3

2.21.1 Known Issues

[BZ 22510](#) On Win7, Watcher reports “No device detected” when AirCard being switched to software installation mode. However, the menu item “Modem Mode” is available to switch the AirCard to modem mode.

2.21.2 Watcher Application/components changes

- Introduction of new Sierra Wireless AirCard branding including new shortcuts.

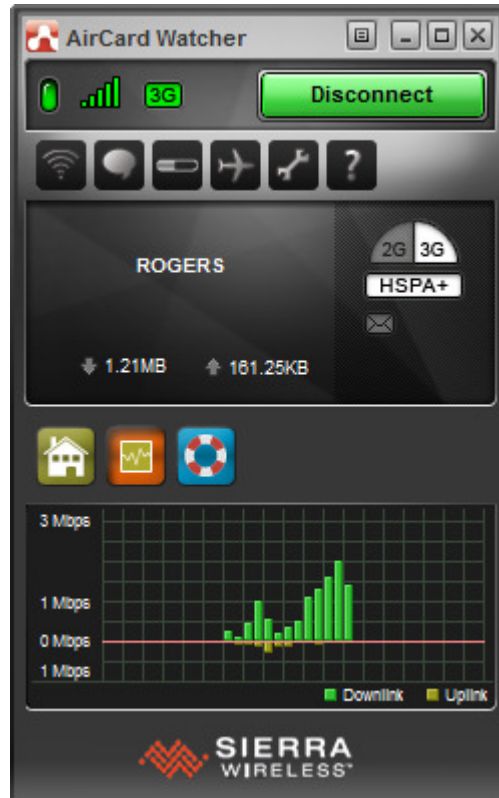


- Stability and reliability improvements of the AirCard detection.
- Suspend/Resume/Hibernate/Surprise removal device detection improvements.

SIERRA WIRELESS, INC.

Document #:		Revision:	11.3.1204.0	Page 26 of 29
-------------	--	-----------	-------------	---------------

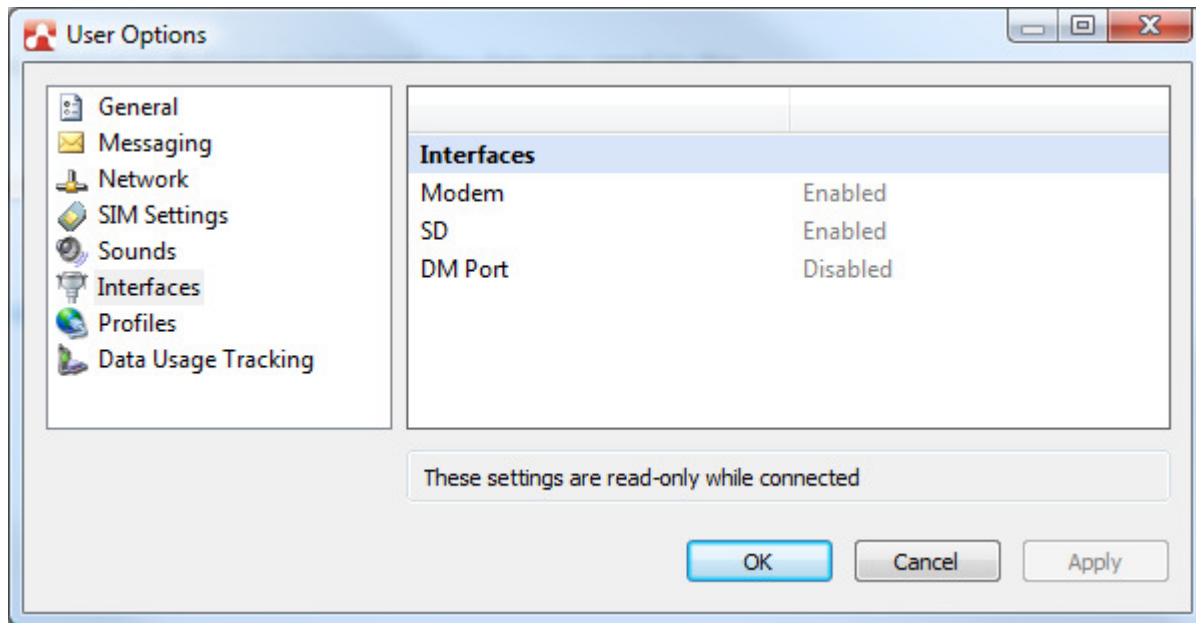
- Faster Watcher startup and AirCard attachment.
- Updated network service indications supporting new air link technologies (DC, LTE, etc.)
- Updated device drivers. By default, this package does not install the Mobile Broadband drivers in Windows 7.
- Ability to track accumulated usage based on simple usage tariffs.
- Added ability to capture diagnostic information
- Throughput Measurement and speed graph user interface control.



SIERRA WIRELESS, INC.

Document #:		Revision:	11.3.1204.0	Page 27 of 29
-------------	--	-----------	-------------	---------------

- Ability to enable/disable AirCard various interfaces



Document #:		Revision:	11.3.1204.0	Page 28 of 29
-------------	--	-----------	-------------	---------------

2.22 Build 2367 – 3G Watcher

Watcher Main Application	Watcher.exe	3.1.0.40
API Interface	SwiApiInterface.dll	1.6.9.5
API MUX	SwiApiMux.exe	1.6.9.5
Watcher Helper Application	WaHelper.exe	1.2.1.14
Driver Installer – USB Generic	Build	Build 2259
Driver Installer – USB Generic	DriverInstaller*.exe	1.0.12.0
MSI Installer	*.msi	5.0.2367.0001
SwiDevInfo	SwiDevInfo.exe	1.0.0.18
Watcher Predefined Profiles	Predefined_Profiles.xml	1.51
TRU-Install	Build	Build 2346
TRUInstall Application	TRUInstall.exe	R2.1.10.0
Web Updater Merge Module	*.msm	Build 2286
Web Updater Application	TRUUpdater.exe	R1.4.1.0
Standalone GPS Application	GpsApp.exe	Build 2335

2.1.1 Watcher Application/Components Change

- [B11383](#): Send and Dial buttons are enabled in draft folder even if To number is blank
- [B15339](#): Watcher generates Exception when skin resources are missing
- [B18732](#): Encrypt options.xml
- [B11818](#): FF-CatB-Eval: Enhancement request: ability to track accumulated data traffic
 - Track data usage
 - Blinking upload/download icon when there is activity
 - Usage history enhancement
- [B9781](#): FF-CatC-Eval: Pop Up for SMS Messages
 - Flashing SMS indication
 - SMS bubble box notification
- [B18826](#): Watcher Customization - DNS not settable in encrypted DefaultProfiles.xml
- [B18906](#): Phone Book doesn't allow entries with same name and different number
- [B11384](#): Receiver name changes in SMS messages already in draft folder if "Save" is clicked
- [B17403](#): HSPA+ service icon support

2.1.2 GPS Monitor

- [B18842](#): Sierra Wireless GPS Monitor menu settings unavailable

2.1.3 TRU-Install

- [B18965](#): TRU-Install picks wrong skin file when multiple connection managers are installed
- [B18502](#): Prompt Troubleshooting Wizard when installation errors occur

2.1.4 Web Updater

- [B18322](#): Added an additional check for updates after installation
- [B18203](#): Update title can now be localized
- [B17591](#): Resolved localized strings getting cut off in the "Check for Updates" dialog

2.1.5 Device Drivers

- [B17857](#): Occasionally UDP data stall with specific lab settings. No end user scenario.

2.1.6 API

- [B17825](#): During driver installation user is prompted to permit "RepairDriver64 application" to run.

SIERRA WIRELESS, INC.

Document #:		Revision:	11.3.1204.0	Page 29 of 29
-------------	--	-----------	-------------	---------------

- [B17561](#) Watcher doesn't repair IP bindings

2.1.7 Installer

- Includes updated English Online Help 2130265 Rev 7.5