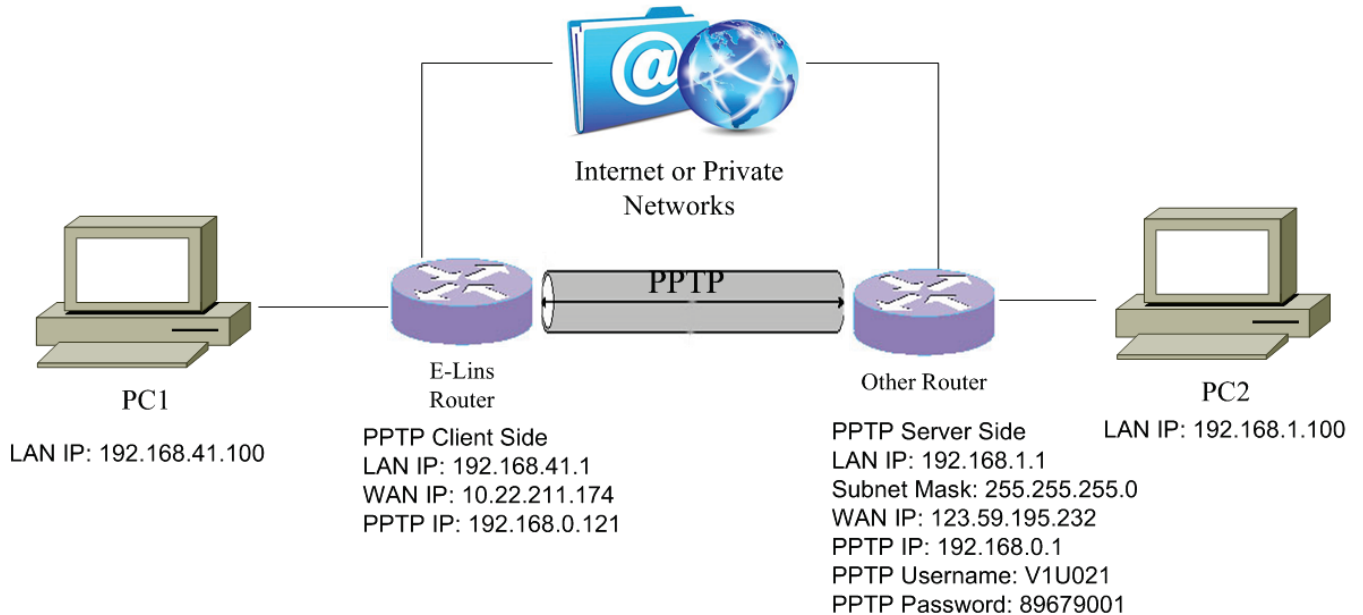



VPN Setting Example - PPTP

PPTP Topology



PPTP Client Side (E-Lins Router)

1. Make sure the PPTP Client Router is online.

Status Overview Network Firewall Routes System Log Kernel Log Reboot Log Realtime Graphs VPN System Services Network Logout	Mobile	WAN	LAN
	Mobile Status		
	Mobile 1		
	Cellular Status	Up	
	Cell Modem	HUAWEI-ME906s-909s (12D1_15C1)	
	IMEI/ESN	867377020419028	
	Sim Status	SIM Ready	
	Strength	 30 / 31, dBm : -53	
	Selected Network	Automatic	
	Registered Network	Registered on Home network: "CHN-UNICOM", 7,	
	Sub Network Type	LTE	
	Location Area Code	718A	
	Cell ID	01F06C1B	

2. Check if PPTP Client Router can visit PPTP Server Router without PPTP. If cannot visit, the PPTP will not be connected. "Router Web --- Network --- Diagnostics",

Diagnostics

Network Utilities

123.59.195.232	www.google.com	www.google.com
IPv4 <input type="button" value="Ping"/>	<input type="button" value="Traceroute"/>	<input type="button" value="Nslookup"/>

```
PING 123.59.195.232 (123.59.195.232): 56 data bytes
64 bytes from 123.59.195.232: seq=0 ttl=48 time=90.122 ms
64 bytes from 123.59.195.232: seq=1 ttl=48 time=89.482 ms
64 bytes from 123.59.195.232: seq=2 ttl=48 time=88.822 ms
64 bytes from 123.59.195.232: seq=3 ttl=48 time=88.362 ms
64 bytes from 123.59.195.232: seq=4 ttl=48 time=87.782 ms

--- 123.59.195.232 ping statistics ---
5 packets transmitted, 5 packets received, 0% packet loss
round-trip min/avg/max = 87.782/88.914/90.122 ms
```

- Open web management page, click "Services" -> "VPN" at the left navigation bar, then click "PPTP" to open PPTP Configuration page.

The screenshot displays the PPTP configuration page. On the left, a sidebar menu has 'VPN 01' selected. The main content area is titled 'Point-to-Point Tunneling Protocol' and 'PPTP Configuration'. It lists configured instances in a table:

Name	Type	Enable	
Pptp	Client	No	Edit Delete
Pptpc	Client	Yes	03 Edit Delete

Below the table is a form to add a new instance:

New instance name: Role:
Client 02


PPTP NAT enable

Input new instance name, the example we input "PPTPc or Test1", and then select "Client" as role, finally Click Button "Add New".

Click button "Edit" in the row of "PPTPc or Test1" instance.

PPTP Client Instance: Test1

Main Settings

Enable	<input checked="" type="checkbox"/>
Server	<input type="text" value="123.59.195.232"/>
Username	<input type="text" value="V1UD21"/>
Password	<input type="text" value="89879001"/> 
Remote LAN subnet	<input type="text" value="192.168.0.0"/>
Remote LAN netmask	<input type="text" value="255.255.255.0"/>
MTU	<input type="text" value="1500"/>
Keep Alive	<input type="text" value="5"/>
Use DNS servers advertised by peer	<input checked="" type="checkbox"/>
Debug	<input checked="" type="checkbox"/>
Restart module when PPTP connects failed	<input checked="" type="checkbox"/>

[Save & Apply](#) [Save](#) [Reset](#)

Checked "Enable", fill in value of "Server" as PPTP Server WAN IP address. Here our PPTP Server Router has WAN IP address 123.59.195.232 and LAN IP address 192.168.1.1

Set username/password we configured on PPTP server.

Set Keep Alive and checkup interval.

Click button "Save & Apply" if everything is done.

4. Wait some seconds until the PPTP Client Router connects to PPTP Server Router via PPTP. Check the link status of PPTP Client Router.

- Status
- System
- Services
- Network
- Operation Mode
- Mobile
- LAN
- Wired WAN
- WAN IPv6
- Interfaces**
- Wi-Fi

Interfaces

Interface Overview

Network	Status	Actions
<div style="border: 1px solid #ccc; padding: 5px; text-align: center;"> QIUHOME I2tp-QiuHome </div>	Uptime: 8h 58m 23s RX: 181.84 KB (1511 Pkts.) TX: 173.15 KB (1426 Pkts.) IPv4: 10.0.20.42/32	<input type="button" value="Connect"/> <input type="button" value="Stop"/> <input type="button" value="Edit"/>
<div style="border: 1px solid #ccc; padding: 5px; text-align: center;"> TEST1 pptp-Test1 </div>	Uptime: 11h 48m 25s RX: 72.00 B (6 Pkts.) TX: 92.00 B (7 Pkts.) IPv4: 192.168.0.121/32	<input type="button" value="Connect"/> <input type="button" value="Stop"/> <input type="button" value="Edit"/>

Once the PPTP connection is up, the PPTP Client Router will display PPTP IP address at "Interface".

5. Ping from PPTP Client Router to PPTP Server Router (with PPTP IP 192.168.0.1)

- Status
- System
- Services
- Network
- Operation Mode
- Mobile
- LAN
- Wired WAN
- WAN IPv6
- Interfaces
- Wi-Fi
- Firewall
- Static Routes
- Switch
- DHCP and DNS
- Diagnostics**
- Loopback Interface

Diagnostics

Network Utilities

IPv4

```

PING 192.168.0.1 (192.168.0.1): 56 data bytes
64 bytes from 192.168.0.1: seq=0 ttl=64 time=55.644 ms
64 bytes from 192.168.0.1: seq=1 ttl=64 time=56.024 ms
64 bytes from 192.168.0.1: seq=2 ttl=64 time=55.804 ms
64 bytes from 192.168.0.1: seq=3 ttl=64 time=54.384 ms
64 bytes from 192.168.0.1: seq=4 ttl=64 time=54.144 ms
          
```

```

--- 192.168.0.1 ping statistics ---
5 packets transmitted, 5 packets received, 0% packet loss
round-trip min/avg/max = 54.144/55.200/56.024 ms
          
```