

Connect Radio Module via Serial

Notes: The radio status will not update during using the “connect radio module” feature.

Wire Connection



DB9 Connection



Terminal Block Connection

Configuration

1. Open web management page, click “Services” → “Connect Radio Module” at the left navigation bar. Check “Enable” checkbox. Set serial port parameters as below. Click “Save & Apply” button.

Status

System

Services

- ICMP Check
- VRRP
- Failover
- DTU
- SNMP
- GPS
- SMS
- VPN
- DDNS
- Connect Radio Module**
- NMS

Network

Connect Radio Module Configuration

Exchange data between radio module and serial

Enable

Connect mode: Serial

Serial baudrate: 115200 bps

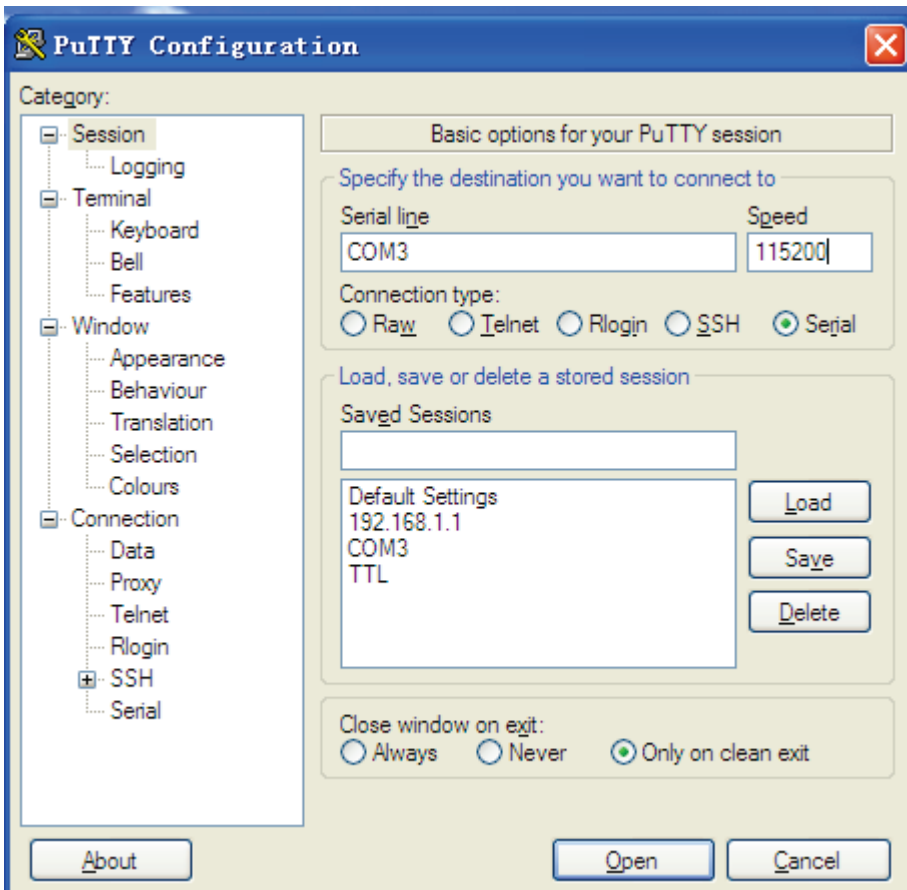
Serial parity: None

Serial databits: 8 bits

Serial stopbits: 1 bits

Save & Apply Save Reset

2. Use "putty.exe". Fill in the correct Serial Port and Speed as below picture. Click "Open" button to run,

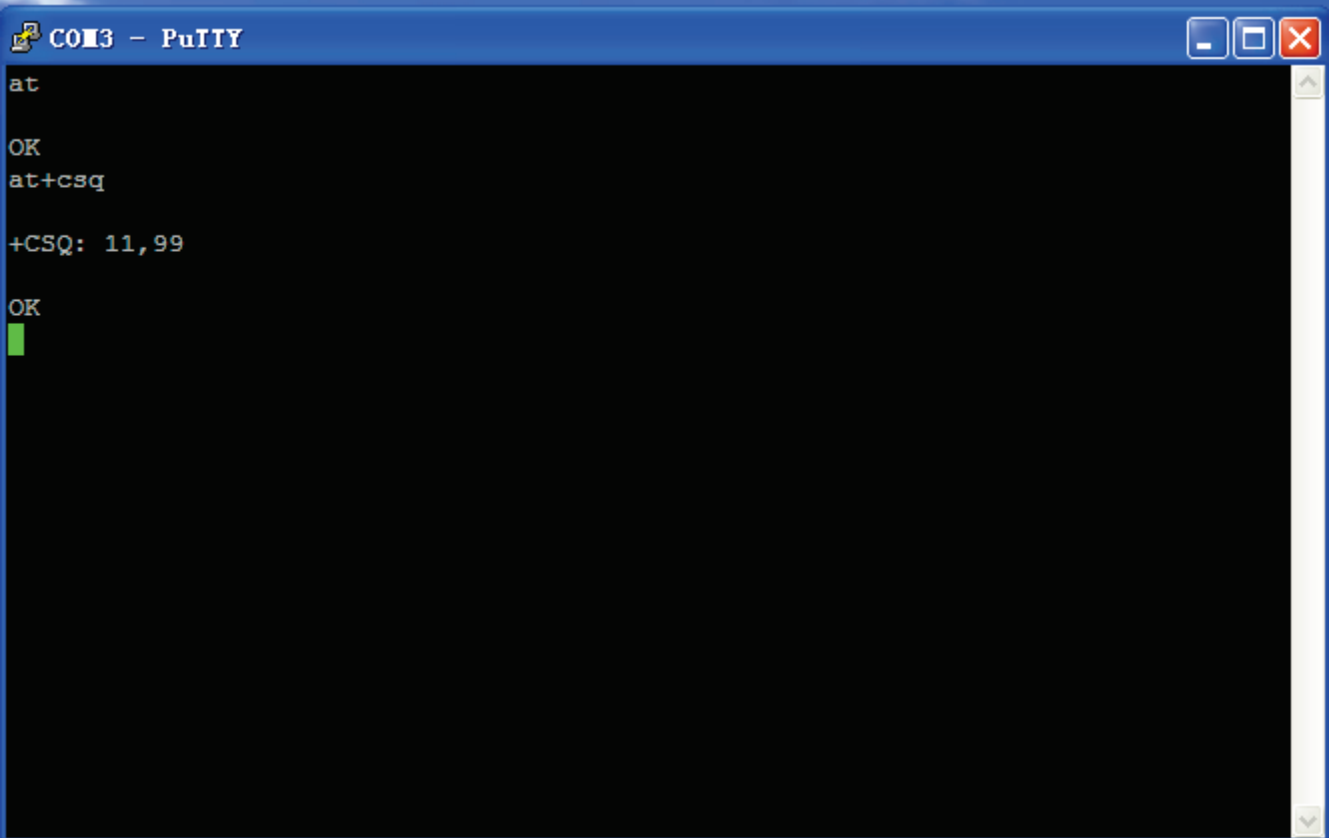


3. Try to input *at commands*.

For example,

input "at" and press "enter" key, it will prompt "OK".

input "at+csq" and press "enter" key, it will prompt signal value.



```
COM3 - PuTTY
at
OK
at+csq
+CSQ: 11,99
OK
█
```