

# M300 Series Modem

## Quick Start

For M300t with MC7710 module

### **E-Lins Technology Co., Ltd**

ADDRESS: Room 1007A, Mintai Building, Minkang Rd., Minzhi Street, Longhua, Bao'an District,  
Shenzhen, 518000, China

PHONE: 86-755-33231620

WEB: <http://www.szelines.com>

## 1. Software Installation

Get the software “Watcher\_Generic3380.msi”, click it to start the installation.



A new icon will appear on the computer desktop once it finishes the installation.

## 2. Modem Setup

Insert the SIM Card into the Modem’s SIM Card Slot.

Connect the cell antenna and gps antenna if your M300 support GPS feature.

Connect the M300 modem to the computer via USB cable.

The computer will automatically find the hardware and install the driver for the M300.



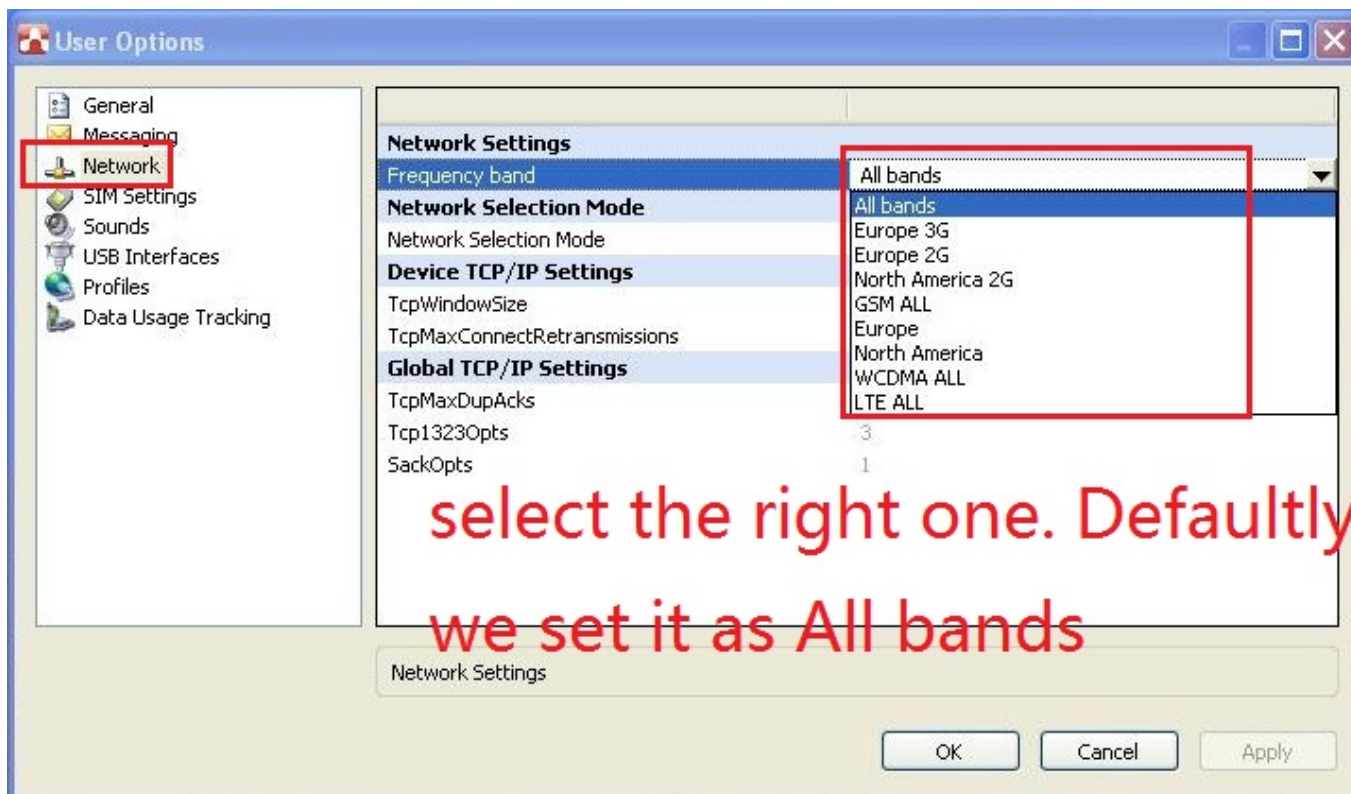
## 3. Internet Connection



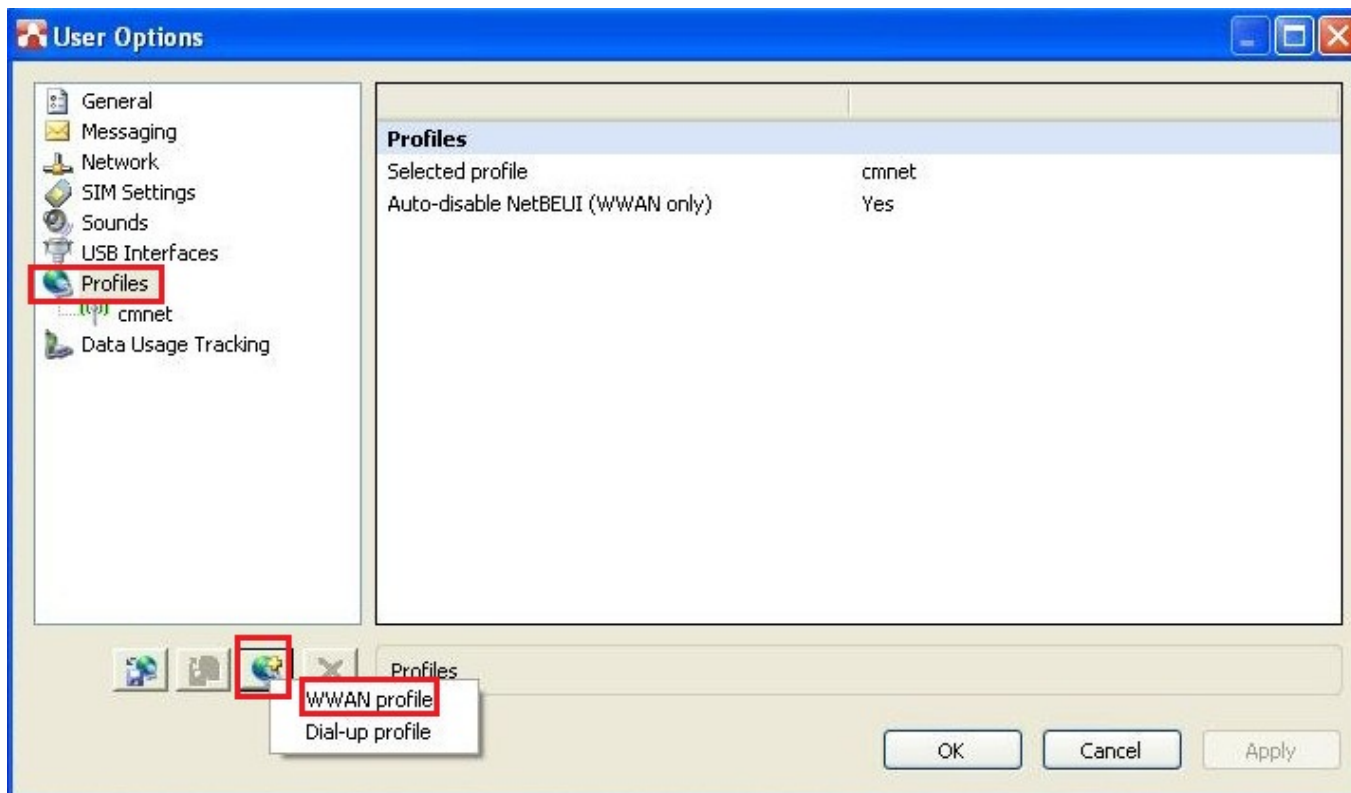
Double-click on the icon and then click “Option Button”



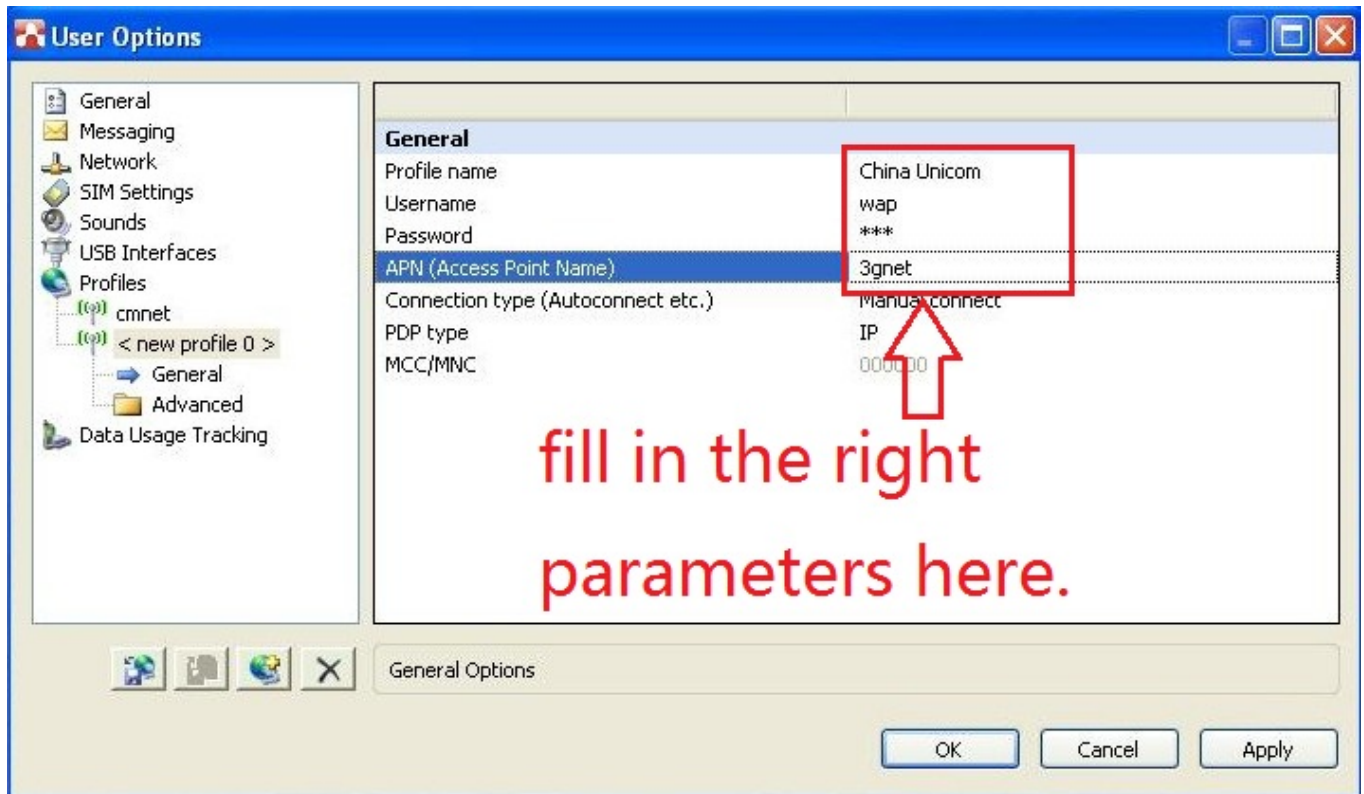
Choose “Network”, select the parameters you need. Normally we set it as “All bands”



Click "Profiles", and "Add new profile", then choose "WWAN profile"



Then fill in the right parameters and click "OK" to save it.



Profile name: you can define the name as yourself.

Username: the sim card username, please get it from your ISP/Carriers

Password: the sim card password, please get it from your ISP/Carriers

APN(Access Point Name): the sim card APN code, please get it from your ISP/Carriers