

## Before Installation and Configuration

1. Please connect the antenna. (GSM/3G antenna connects to M300 Cell connector, GPS antenna connects to M300 AUX connector)
2. Please insert the SIM card in the M300 sim card slot.
3. Please confirm the site area has Cellular signal and GPS signal. GPS has no signal indoor.

**Notes: This quick start is for M300-EM820w or M300-MU609 with 3G and GPS feature. M300 version with 3G or GPS feature can refer to this manual.**

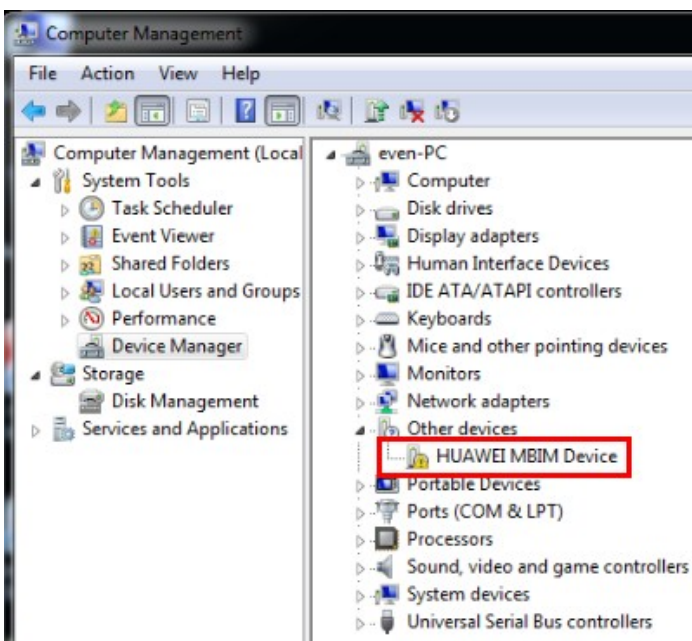
### Step 1) Install the drivers.

Notes: please don't run "exe" files to install. Please browse file directory to install step by step, which will make 100% installation.

1.1) In the installation zip files, there are several file directories (if you don't have the installation zip files, please download separately for each software).

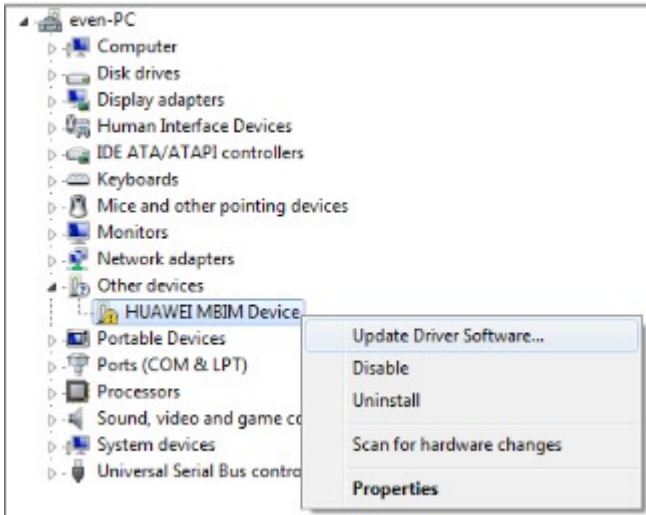
MiniGPS_1.39	3/3/2014 1:39 PM	File folder
Mobile Partner1	3/3/2014 1:39 PM	File folder
SSCOM	3/3/2014 1:39 PM	File folder
sscom32English	3/3/2014 1:39 PM	File folder
WinDriver_4.25.23.04	3/3/2014 12:20 PM	File folder

1.2) Please connect the USB cable between M300 USB port and PC USB port. The PC will detect the hardware and try to install drivers. Open the PC's "Computer Management" – "Device Manager"



The PC finds the HUAWEI MBIM Device. Don't care if install the drivers or not.

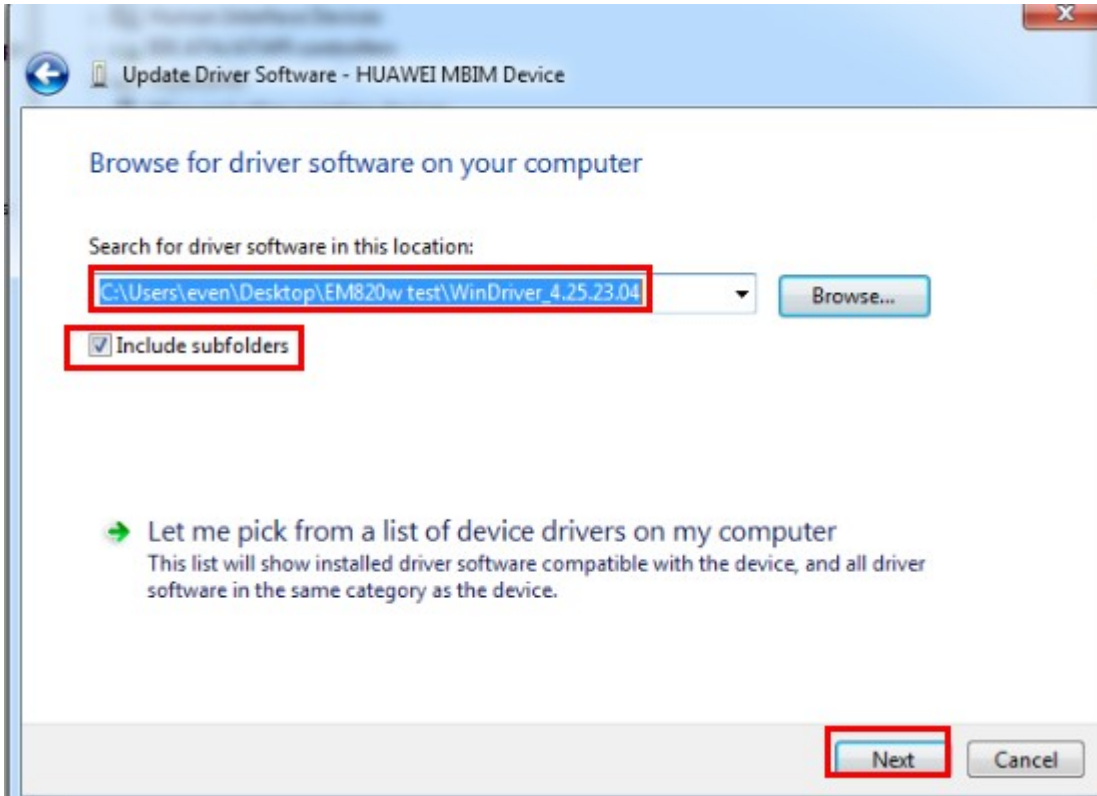
1.3) Select the "HUAWEI MBIM Device", right click and select "Update Driver Software".



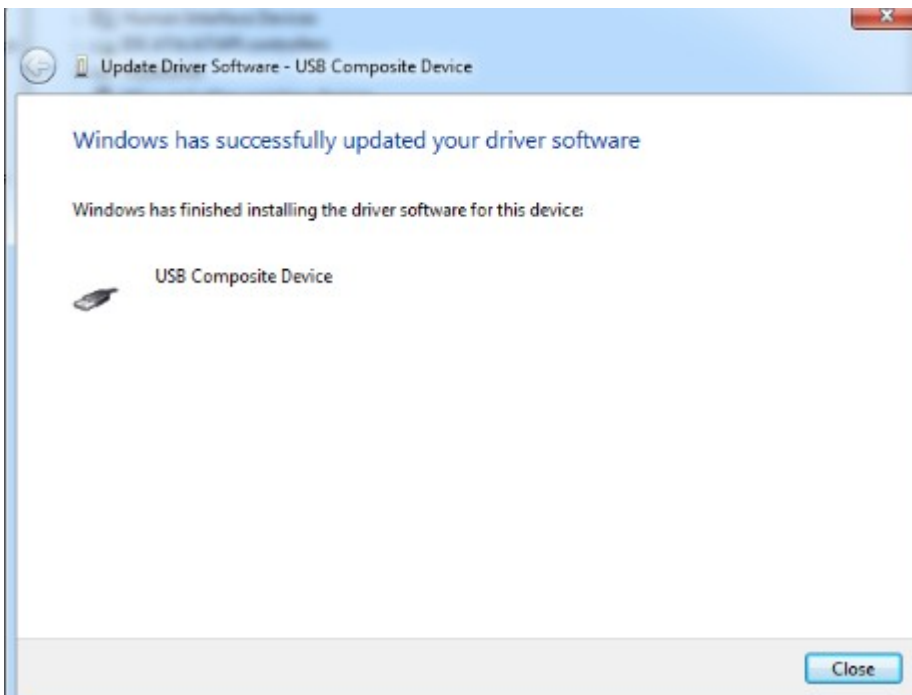
1.4) Select "Browse my computer for driver software"



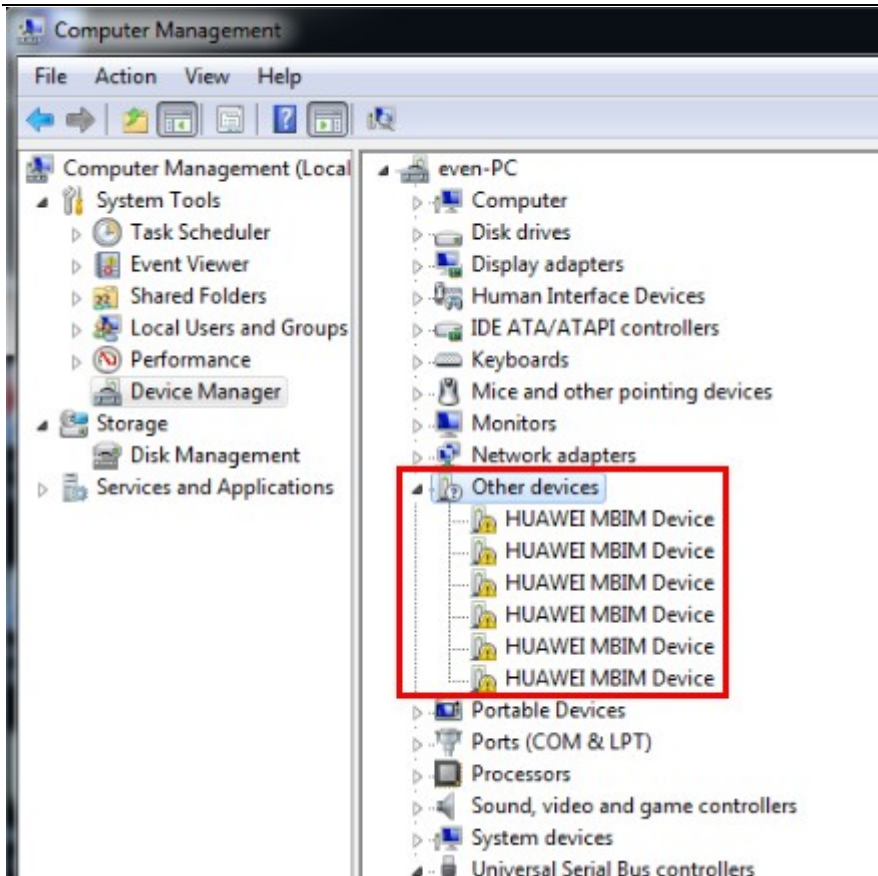
1.5) Browse and select the correct driver directory.



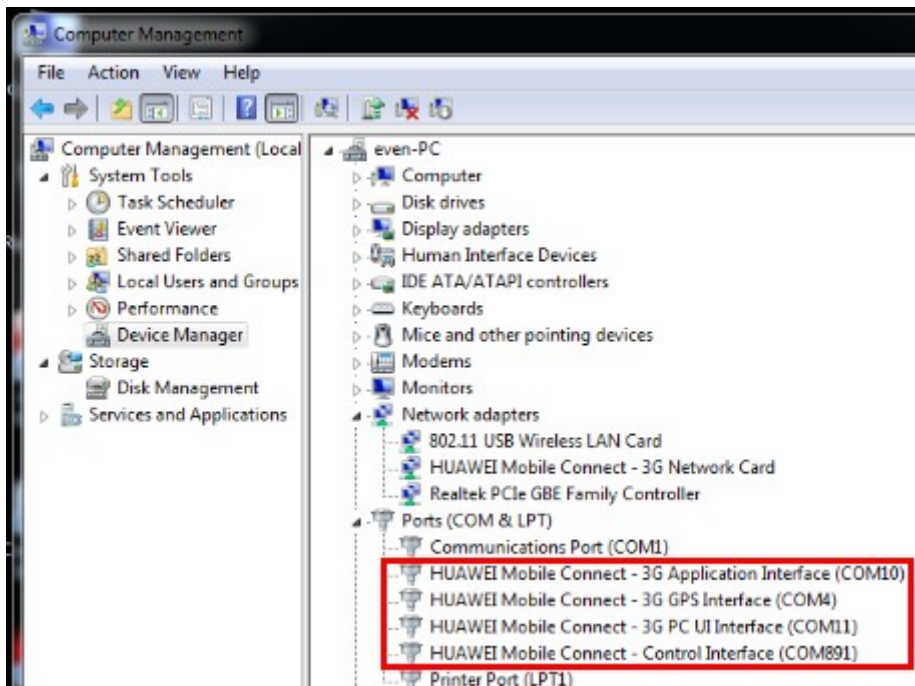
1.6) It will indicate the following picture if driver installation is successful.



1.7) After installing the driver, the PC will detect several devices and COM ports.



1.8) Select the “HUAWEI MBIM Device” and install the drivers similar to steps 1.3~1.6. Once all are installed, it indicates the following COM ports.



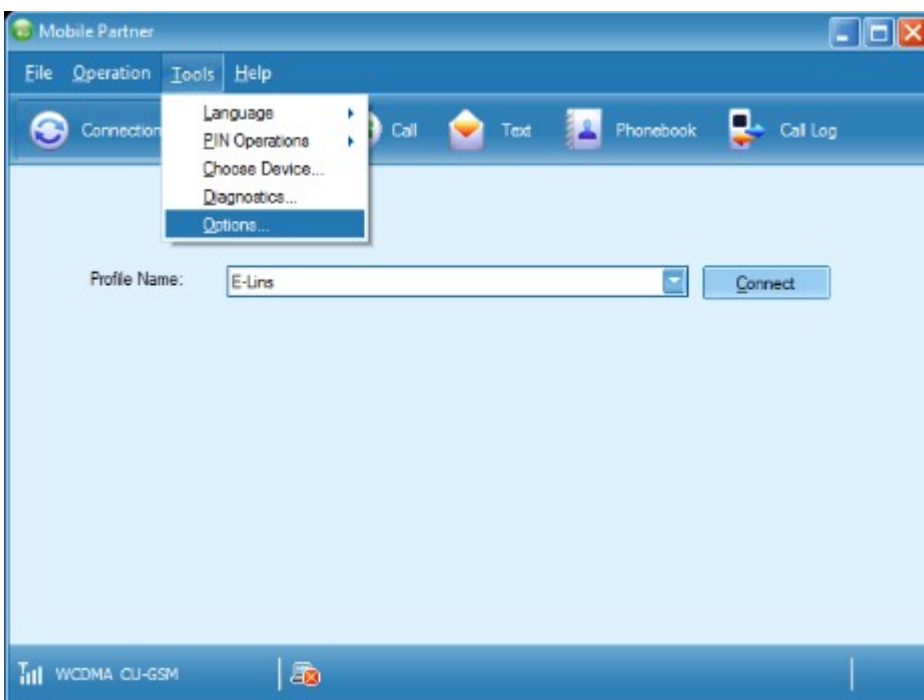
**Notes:**

- 1) Please make sure your PC has no much COM ports existed already. Please delete the unnecessary COM port before installation. Our COM port number cannot be over 40. If over 40, the GPS software will not work.
- 2) Different PC will get different COM port number. But it will display total 4 COM ports for our M300 modem.

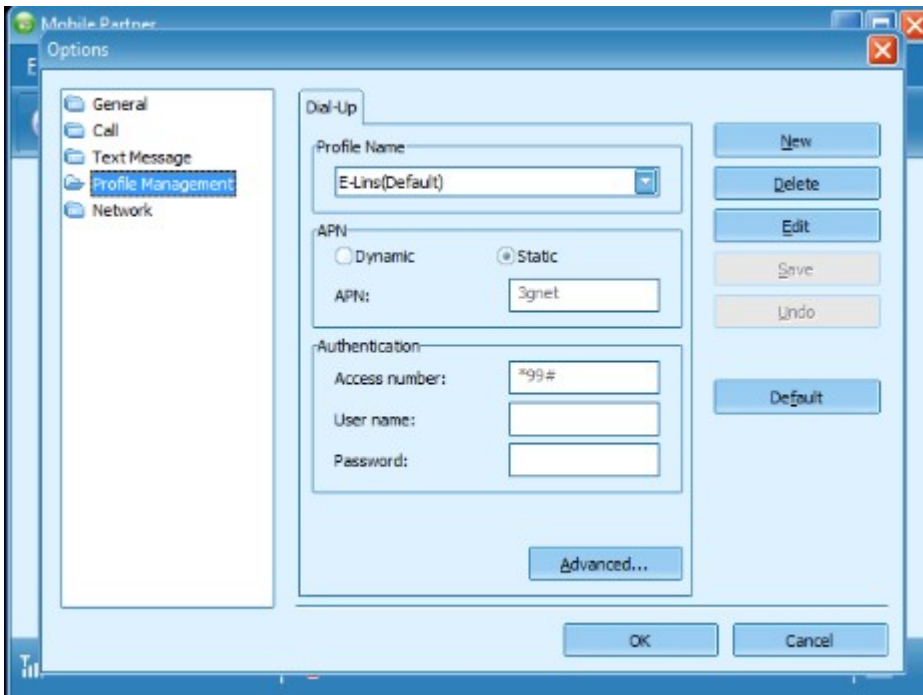
3G Application Interface (COM10) – for 3G dialup use, software tool will select this COM port automatically.  
3G GPS interface (COM4) – for GPS use, we need to select this COM port to the GPS software manually.  
3G PC UI interface (COM11) – for 3G dialup tool use, software tool will select this COM port automatically.  
Control interface (COM891) – for AT command use, we need to select this COM port to the control software manually.

**Step 2) 3G dialup.**

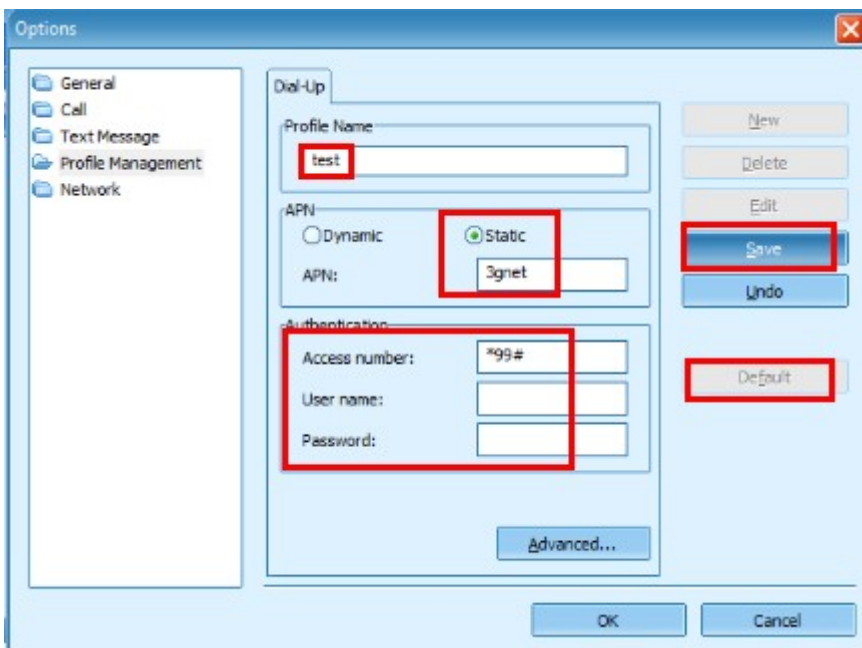
2.1) In the installation zip files, find “Mobile Partner1” – “Mobile Partner.exe”, run it.



2.2) Create APN profile for M300. Select “Tools”—“Options”—“Profile Management”



2.3) Click “New” to create,



Fill in a name in the “Profile Name”, Choose “Static”, Fill in correct APN parameter, Access Number, User name and Password. Click “Save” and set it as default with clicking “Default” button.

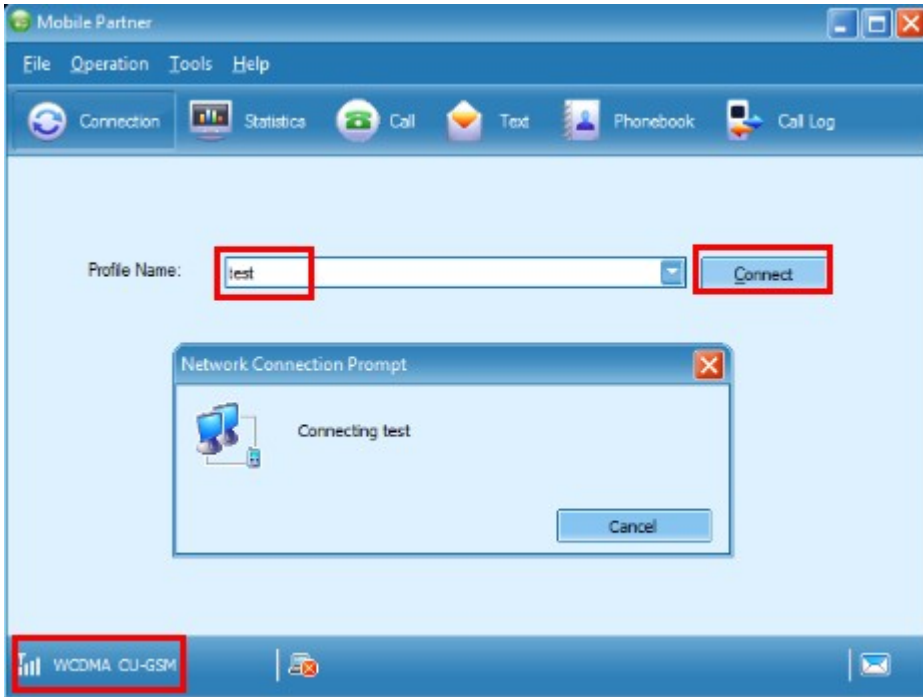
Notes:

1) each cellular network carrier use its own APN parameters. Please check with your carriers before configuration.

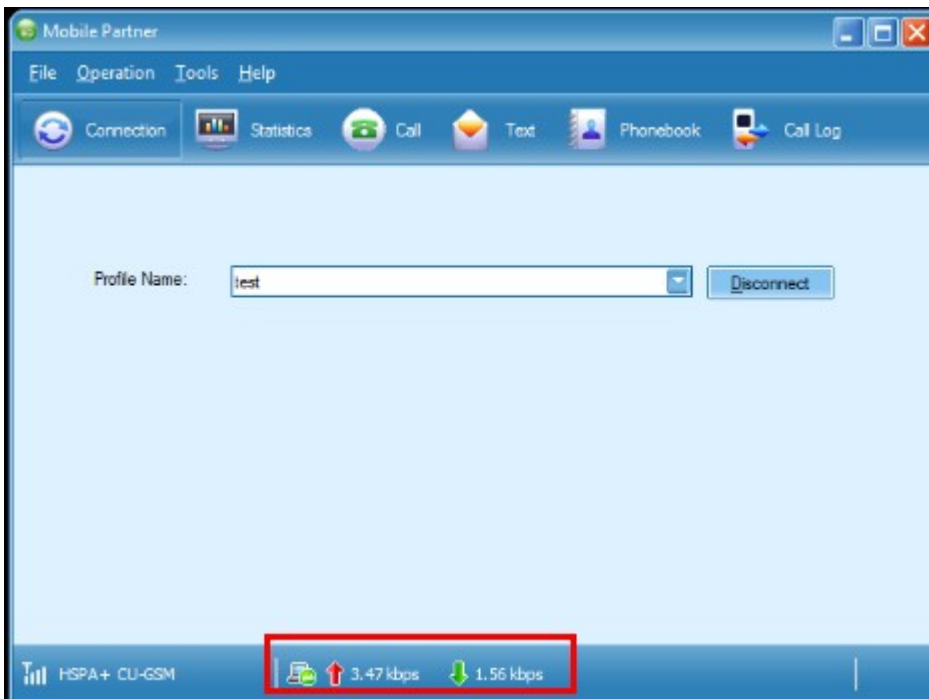
Wrong configuration will make 3G not dialup.

2) please make sure the SIM card has enough balance. Otherwise it may not dialup.

2.4) "Mobile Partner" will detect the SIM card and network. Select the filled "Profile Name" and click "Connect" to dialup to 3G.

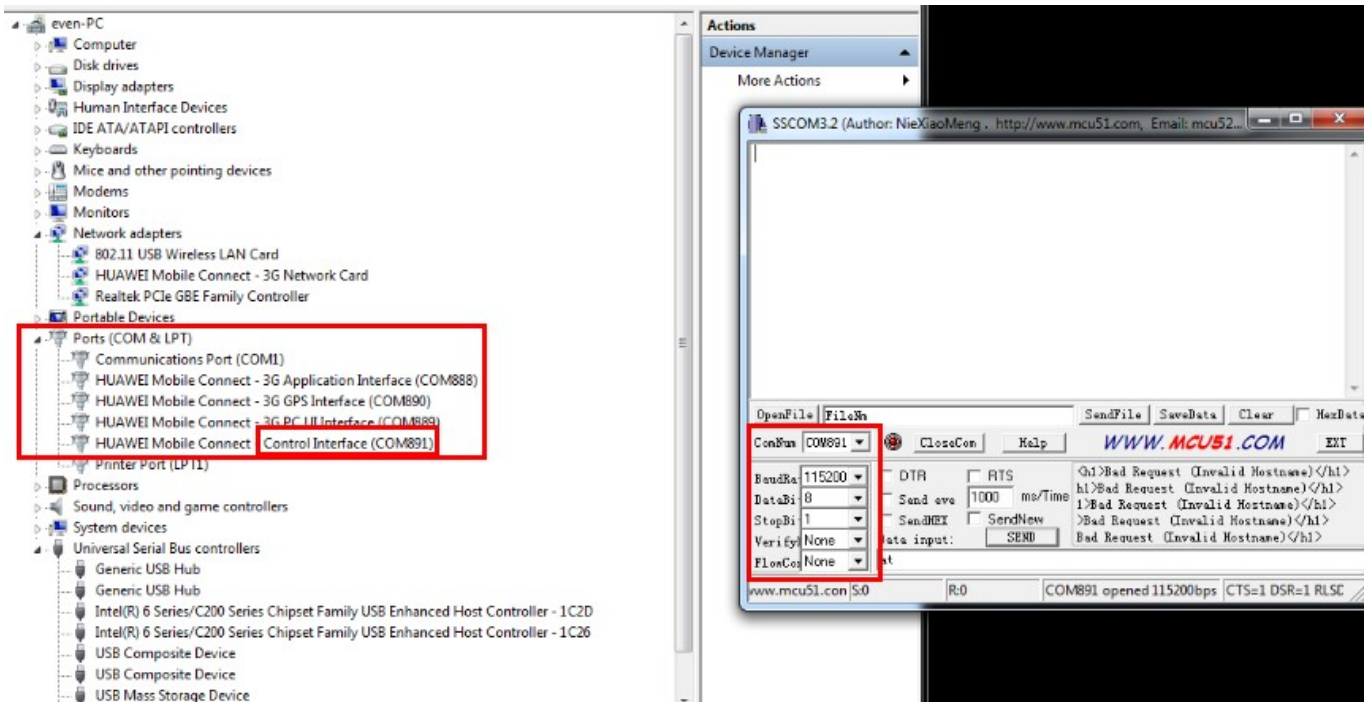


2.5) once dialup, it indicates the download and upload. Then can use the 3G freely.



### Step 3) GPS activate and use.

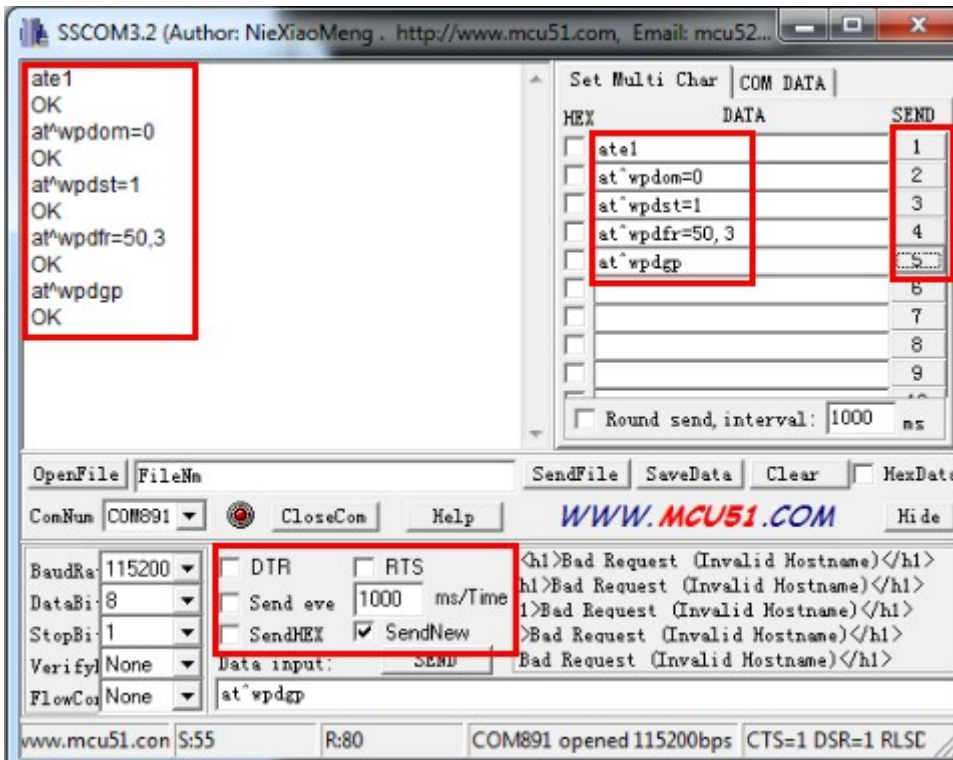
3.1) In the installation zip files, find “sscom32English” – “sscom32E.exe”, run it.



Select the “ComPort” for “SSCOM32”. Wrong COM port number will not work.

3.2) click “EXT” button, configure it and fill in some command.





Uncheck “DTR”, “RTS”, “Send eve” and “SendHEX”. Check “SendNew”.

Command list below,

ate1

at^wptom=0

at^wptom=1

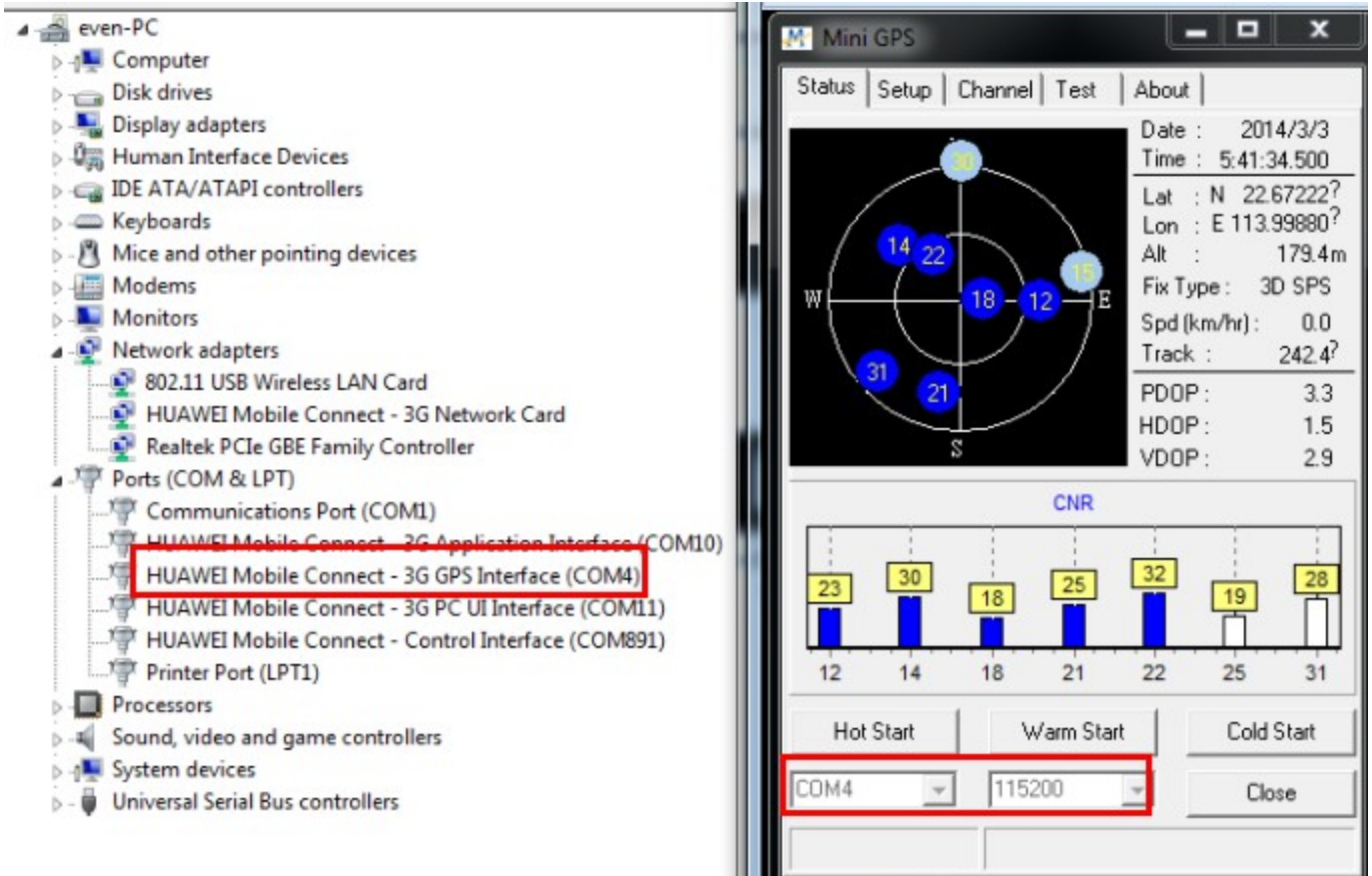
at^wptom=50,3

at^wptom

Fill in the 5 commands. Click “1”, “2”, “3”, “4”, “5” one by one, it will indicates 5 “OK”, which means the GPS feature is activated.

3.3) In the installation zip files, find “MiniGPS\_1.39” – “MiniGPS\_1.39.exe”, run it.

3.4) configure the “Mini GPS” in below picture.



COM port and Baudrate must be correct. Click "Start" to monitor. It will indicates the GPS info.