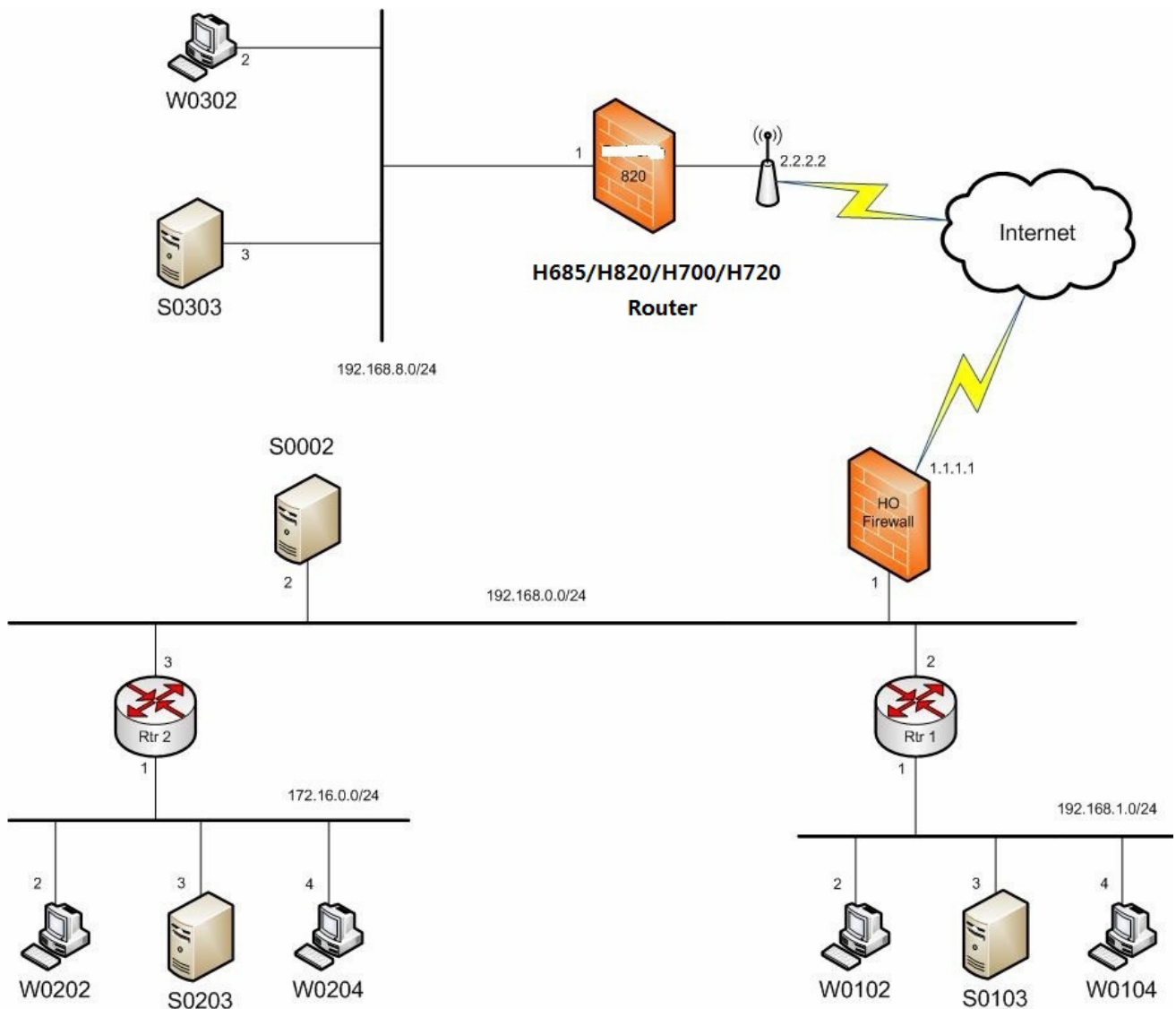


E-Lins Router IPsec Setting – Part II

This is IPsec setting for “Local Network Type -- Subnet” + “Remote Network Type – Any+some_wan”

Typical Simple Diagram



Notes: H685/H820/H700/H720 router is from E-Lins.

Need feature to work as the followed description,
W0302 (192.168.8.2) can ping through Server S0002(192.168.0.2) and Server S0103 (192.168.1.3) and S0203(172.16.0.3).

E-Lins Technology Co., Limited

Tel: +86-755-29230581 E-mail: sales@e-lins.com / sales@szelins.com www.szelins.com www.e-lins.com

Step 1) Confirm H685/H820/H700/H720 Router can be online if it uses WAN CELL Network.

Step 2) Configure IPsec.

IPSEC VPN

| IPSEC | |
|---------------------|----------------------|
| Name (ID/FQDN) | vpn1 |
| Service Mode | Client ▾ |
| Exchange Mode | Aggressive ▾ |
| Gateway | shenlanhome.3322.org |
| Local Network Type | Subnet ▾ |
| Local IP | 192.168.8.0 : 24 |
| Remote Network Type | Any+some_wan ▾ |
| Some wan to access | |
| Auth Method | Pre Shared Key ▾ |
| password | •••••• |
| Interface | WAN ▾ |
| | Advance |

Click "Apply" button to add the IPsec VPN profile.

Step 3) Enable the configured IPsec VPN profile.

IPSEC VPN

| IPSEC List | | | | | | |
|-------------------------------------|------|----------------|-------------------|-----------|---------------|-------------|
| Select | Name | Service Status | Gateway | Interface | Active Status | Link Status |
| <input checked="" type="checkbox"/> | vpn1 | client | e-lins.dyndns.org | WAN | Inactive | down |