

H685/H820/H700/H720 Port Forwarding From Port 5000 to 22

Preparation Job

1) Get two H685/H7820/H700/H720 routers. One for Client side and the other for Server side. Both should be online.

Step 1) Set Server Side Router port forwarding value below.

Virtual Server Settings

You may setup Virtual Servers to provide services on Internet.

Port Forwarding	
Port Forwarding	Enable ▾
IP Address	<input type="text"/> : <input type="text"/>
Port Range	<input type="text"/> - <input type="text"/>
Protocol	TCP&UDP ▾
Interface	WAN ▾
Comment	<input type="text"/>

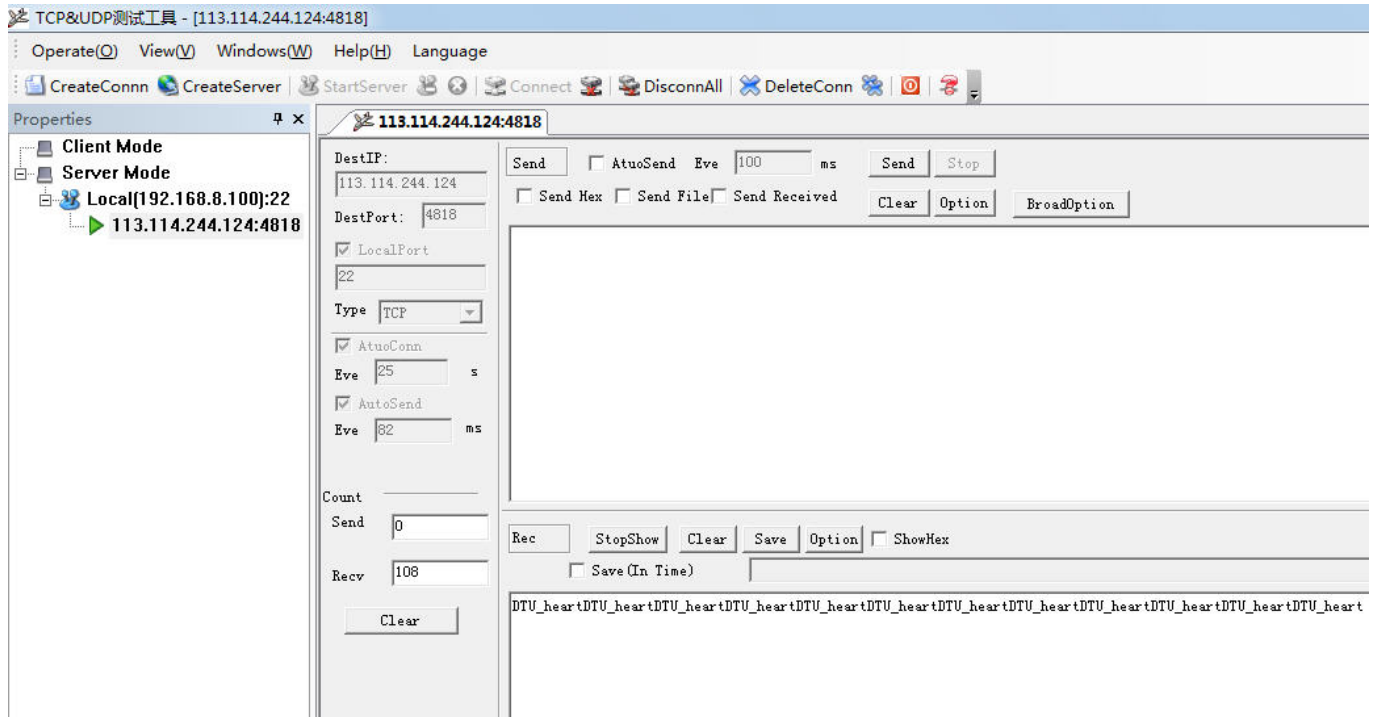
(The maximum rule count is 32.)

Current Port Forwarding in system:					
No.	IP Address	Port Range	Protocol	Interface	Comment
1 <input type="checkbox"/>	192.168.8.100:22	5000 - 5000	TCP + UDP	WAN	

IP Address – fill in 192.168.8.100:22

Port Range – fill in 5000-5000

Step2) Run TCP Tool as Server mode. Once client side is connected to server side, it will display link.



The 192.168.8.100 is LAN IP assigned by H685/H820/H700/H720 router.

Step 3) Configure client side DTU feature. Just take DTU feature as example. Users can use a PC to run TCP&UDP tool with Client Mode (not Server Mode).

DTU Settings

DTU Status Table	
dtu status	on ▾
DTU Serial Settings Table	
baudrate	115200 ▾ bps
parity	none ▾
databits	8 ▾ bits
stopbits	1 ▾ bits
flow control	none ▾
DTU config Table	
link type	client ▾
network type	tcp ▾
server 1	<input checked="" type="checkbox"/> 113.115.225.28 : 5000
server 2	<input type="checkbox"/> 192.168.8.101 : 5000
server 3	<input type="checkbox"/> 192.168.8.102 : 5000
server 4	<input type="checkbox"/> 192.168.8.103 : 5000
Send heart beat	ON ▾
heart beat time	5
heart beat infomation	hex <input type="checkbox"/> DTU_heart

Dtu status: should be "on"

Server 1: input IP address of Server Router's WAN IP and Port. This port is Server Router's external port.

Once connected, the Server Side TCP tool will receive the "DTU_heart" data from the Client Side. Data goes through,

Client Side WAN ---Server Side external port 5000---Server Side internal port 22