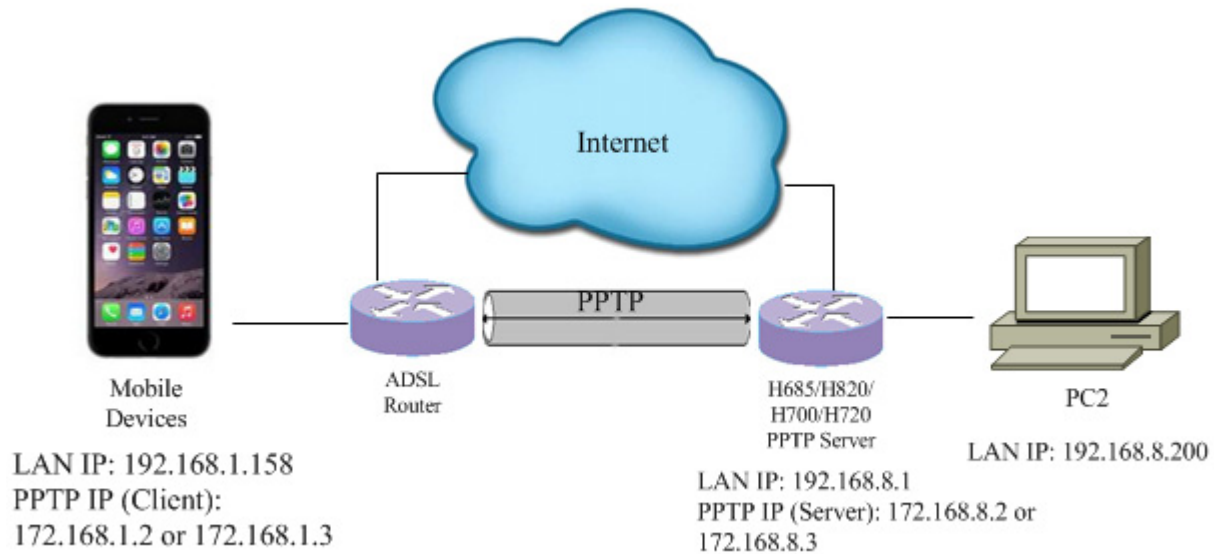


H685/H820/H700/H720 PPTP Server Mobile Devices PPTP Client

Typical Simple Diagram



Notes: please make sure both client and server are online, and signal is good enough if Server side use cellular network.

A) PPTP Server Side Router Settings

[open all](#) | [close all](#)

- Router
 - Status
 - Operation Mode
 - DTU
 - Link Backup
 - GPS
 - SMS/Voice
 - VRRP
 - Connect Modem
 - SMS
 - Network Settings
 - VPN
 - Isec
 - PPTP Server
 - PPTP Client
 - L2TP Client
 - Tunnel
 - WIFI
 - Firewall
 - Administration

Operation Mode Configuration

You may configure the operation mode suitable for you environment.

Bridge:
All ethernet and wireless interfaces are bridged into a single bridge interface.

Gateway:
The first ethernet port is treated as WAN port. The other ethernet ports and the wireless interface are bridged together and are treated as LAN ports.

AP Client:
The wireless apcli interface is treated as WAN port, and the wireless ap interface and ethernet ports are LAN ports.

Ethernet wan port as wan in AP Client Mode

Ethernet wan port as lan in Cell Gateway Mode

All Data to WAN with NAT

NAT Enabled:

TCP Timeout

UDP Timeout

Notes: the PPTP Server Router must check "All Data to WAN with NAT", otherwise the PPTP Client cannot visit the internet.

[open all](#) | [close all](#)

- Router
 - Status
 - Operation Mode
 - DTU
 - Link Backup
 - GPS
 - SMS/Voice
 - VRRP
 - Connect Modem
 - SMS
 - Network Settings
 - VPN
 - Isec
 - PPTP Server
 - PPTP Client
 - L2TP Client
 - Tunnel
 - WIFI
 - Firewall
 - Administration

PPTP Server

PPTP Server Settings	
PPTP Server Active	<input checked="" type="checkbox"/>
Debug	<input type="checkbox"/>
VPN Local IP	<input type="text" value="172.168.8.2"/> -- <input type="text" value="172.168.8.10"/>
VPN Remote IP	<input type="text" value="172.168.1.2"/> -- <input type="text" value="172.168.1.10"/>
MPPE Encryption	<input type="checkbox"/>

Add PPTP User

Add PPTP User

Add PPTP User	
User *	<input type="text" value="pptp"/>
Password *	<input type="password" value="...."/>
Confirm Password *	<input type="password" value="...."/>
Static IP	<input type="text"/>
Remote Lan/Mask	<input type="text" value="192.168.1.0"/> / <input type="text" value="24"/>

PPTP User List

PPTP User List				
ID	User	Password	Static IP	Remote Lan/mask
1 <input type="checkbox"/>	pptp	*****		192.168.1.0/24

B) Client Side Settings

At mobile devices, make sure can connect to internet and visit PPTP Server Router WAN IP.

C) PPTP connection

At mobile devices, create a connection for VPN.



Check and configure the VPN Connection.





While the VPN is connected, try to connect the VPN Server Router web from VPN Client mobile devices.

