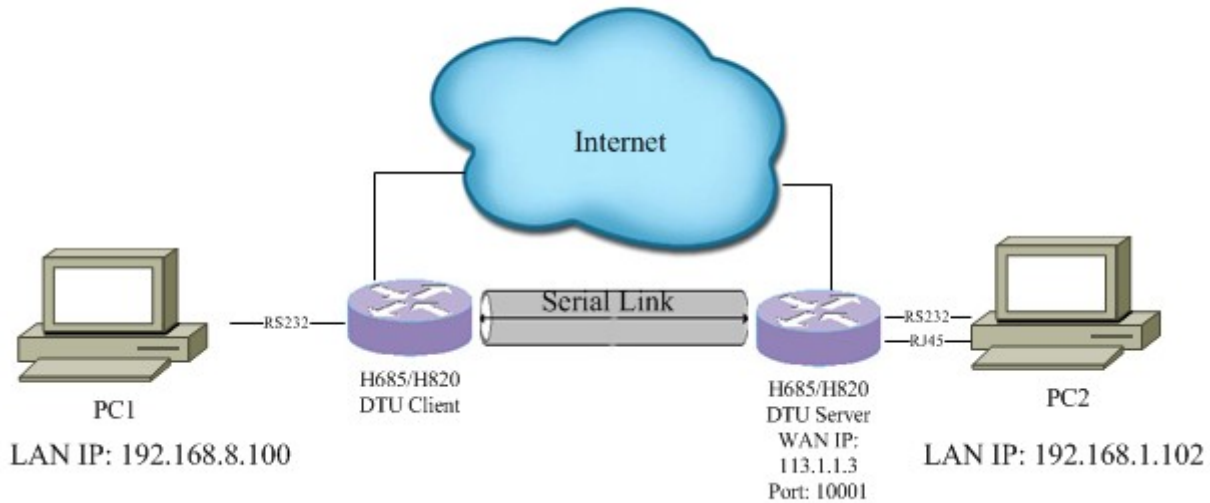


H685/H820 DTU

Typical Simple Diagram



Confirm H685/H820 can be online if it uses WAN CELL Network. Please follow the H685/H820 manual for the details

Step 1) DTU Server Side Configuration

Configure the DTU Server as follows,

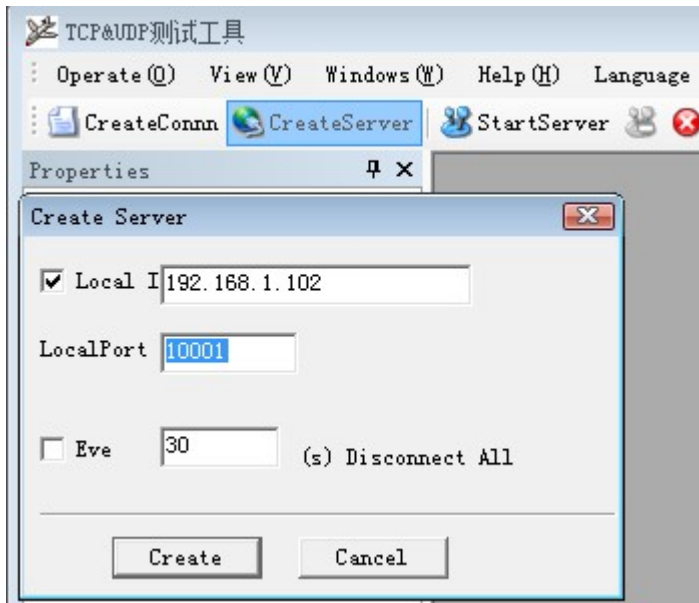
DTU Status	
dtu status	on ▼
DTU Serial setting	
serial baudrate	9600 ▼ bps
serial parity	none ▼
serial databits	8 ▼ bits
serial stopbits	1 ▼ bits
serial flow control	none ▼
DTU config	
mode	server ▼
Protocol	tcp ▼
server port	10001
send delay time(unit:ms)	200
Add id string to head	<input type="checkbox"/> ID_0001 <input type="checkbox"/> add to heartbeat info

Step 2) DTU Client Side Configuration

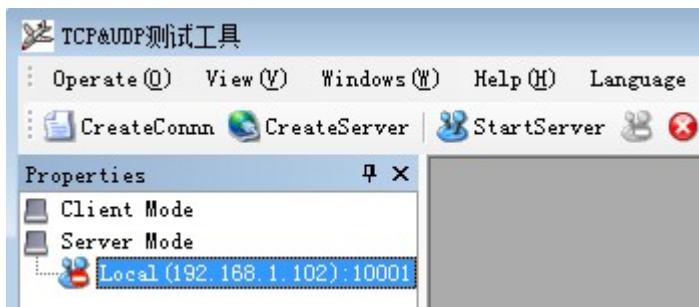
Configure the DTU Client as follows,

DTU Status	
dtu status	on ▼
DTU Serial setting	
serial baudrate	9600 ▼ bps
serial parity	none ▼
serial databits	8 ▼ bits
serial stopbits	1 ▼ bits
serial flow control	none ▼
DTU config	
mode	client ▼
Protocol	tcp ▼
server 1	<input checked="" type="checkbox"/> 113.1.1.3 : 10001
server 2	<input type="checkbox"/> 192.168.8.101 : 5000
server 3	<input type="checkbox"/> 192.168.8.102 : 5000
server 4	<input type="checkbox"/> 192.168.8.103 : 5000
Send heart beat	on ▼
heart beat interval time (unit:s)	5
heart beat information	hex <input type="checkbox"/> DTU_heartbeat
send delay time(unit:ms)	200
Add id string to head	<input type="checkbox"/> ID_0001 <input type="checkbox"/> add to heartbeat info
<input type="button" value="apply"/>	

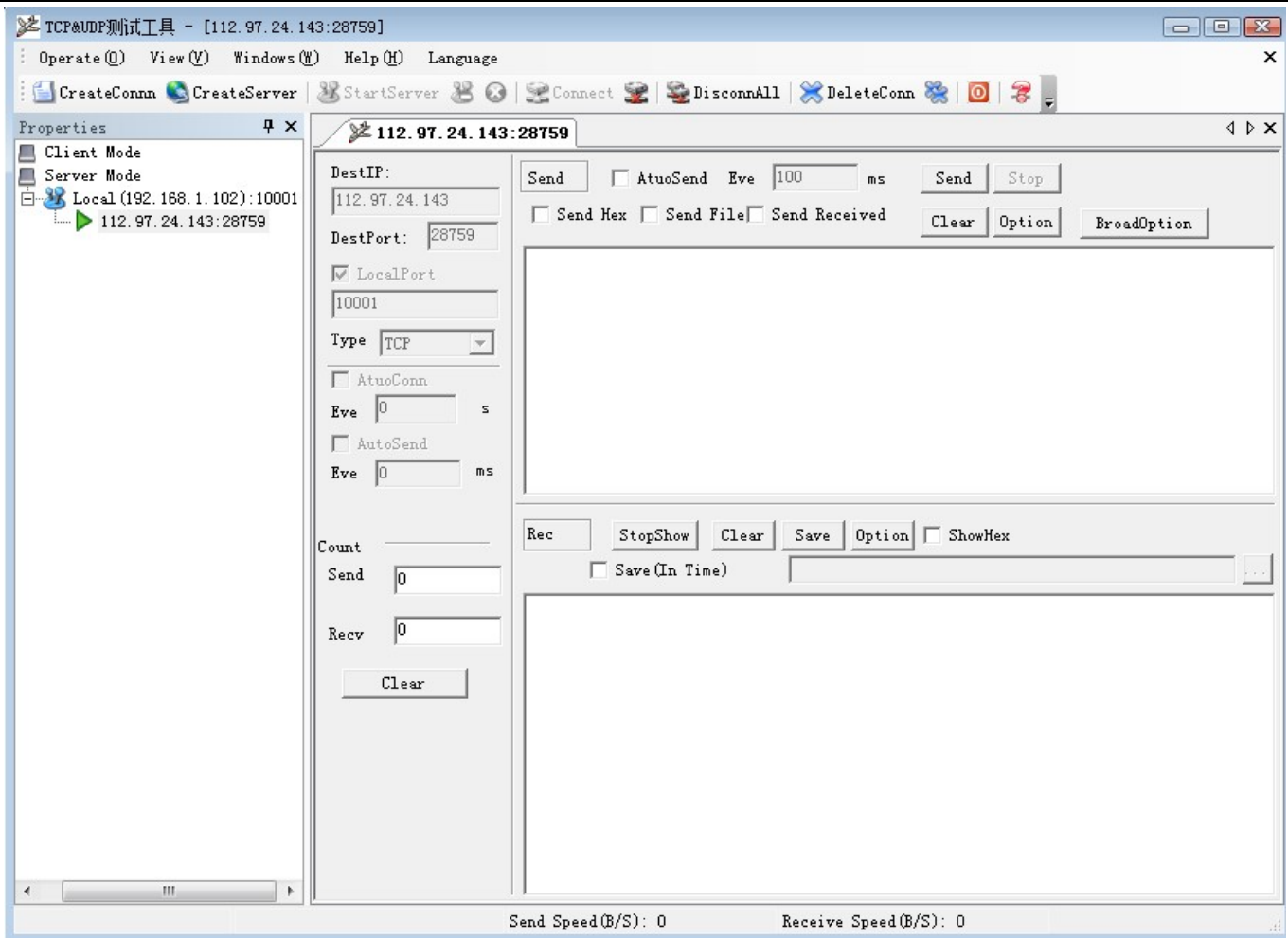
Step 3) at server PC, run the server tool software. You can choose your own server tool software.



Click "CreatServer" button, fill in the parameters similar as above. This is as server IP and Port. If your server PC is behind a router/firewall, please make NAT/NAPT feature at the router/firewall.
Click "Create" button to finish.

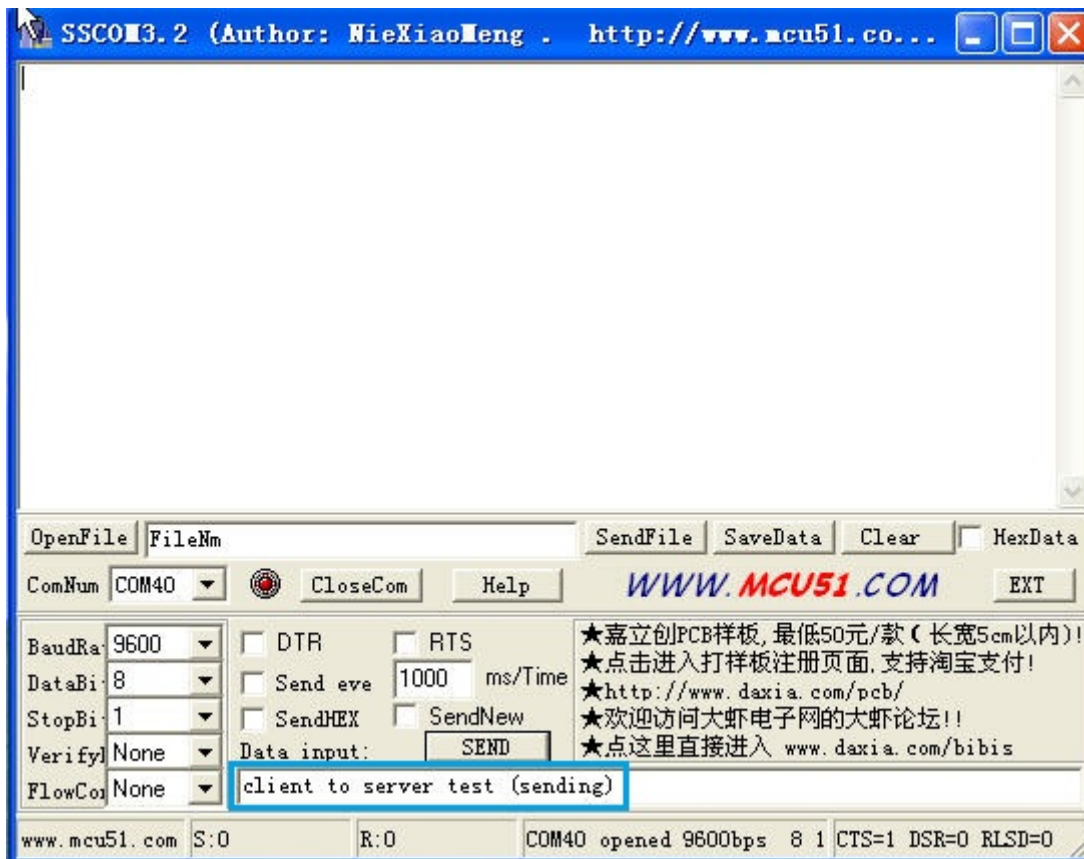


Choose the Server we created, and click "StartServer" button. Then the H685m-client will automatically try to connect the Server. Once the TCP connection is created, it will show the following.

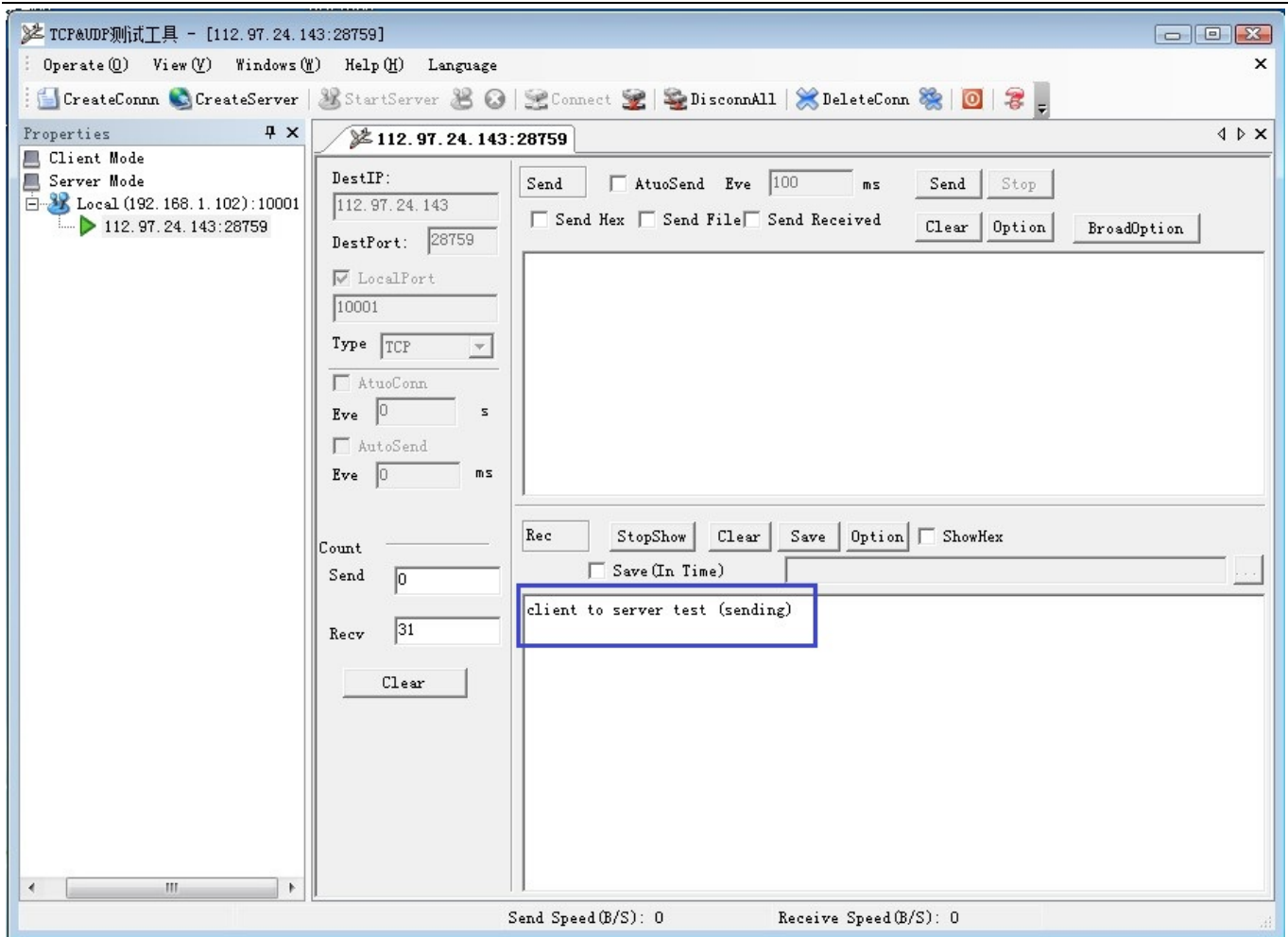


Step 4) At Client PC, run the serial tool. Here we use SSCOM3.2 software tool. You can use hyper terminal at Windows or other software tool. Configure the right parameters with the Client DTU parameters.

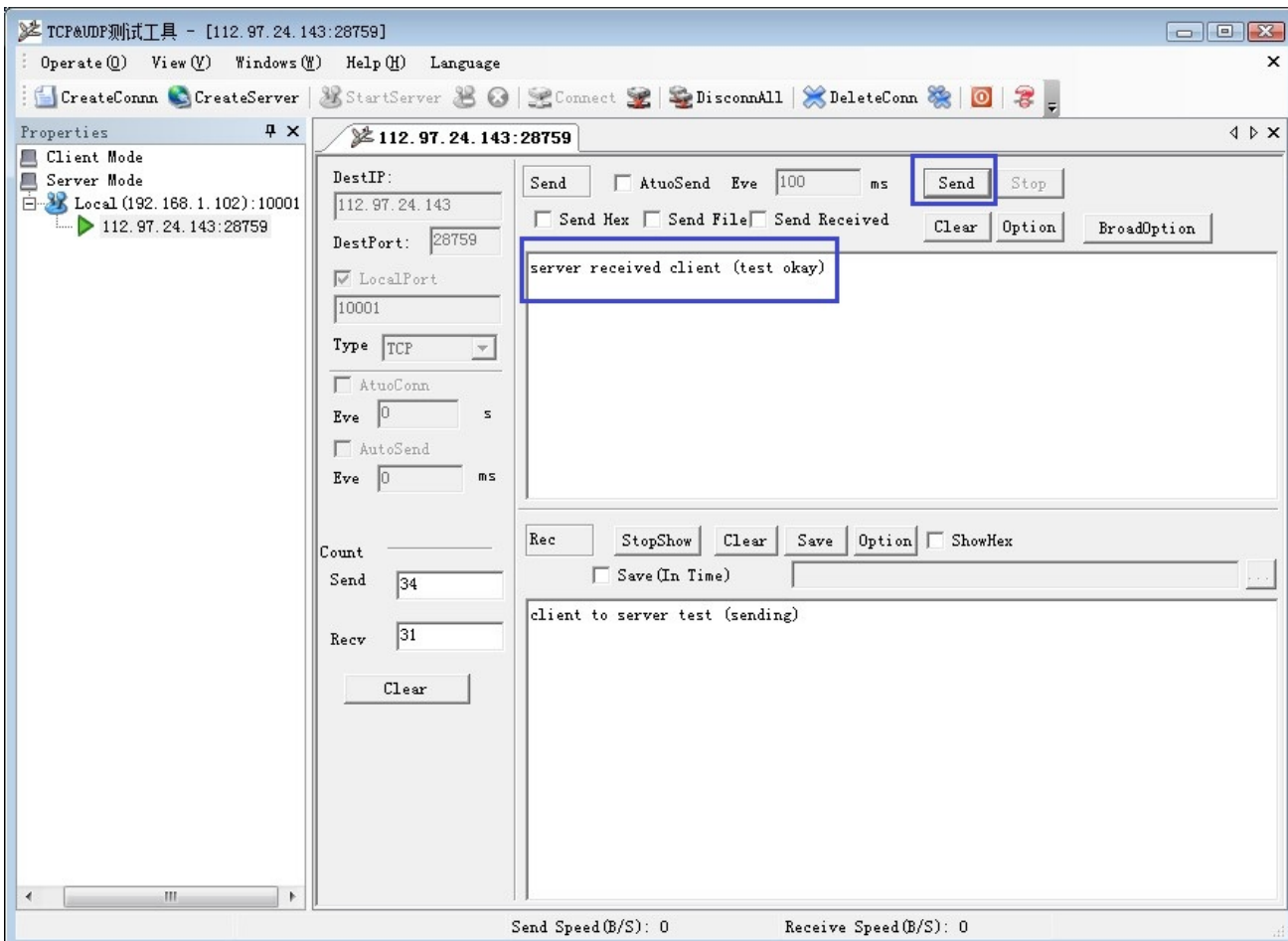
Try to send some messenger, for example “client to server test (sending)”, and click “SEND” button.



The Server side will receive the related message, which indicates the "client to server" test is working.



Step 5) From “Server Side”, try to send some message to client side, for example,



The client side will receive the related message, which indicates the “server to client” test is working.

