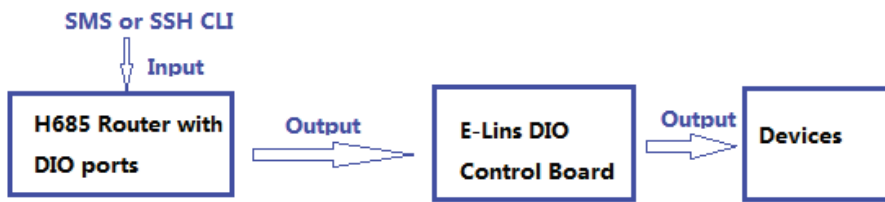
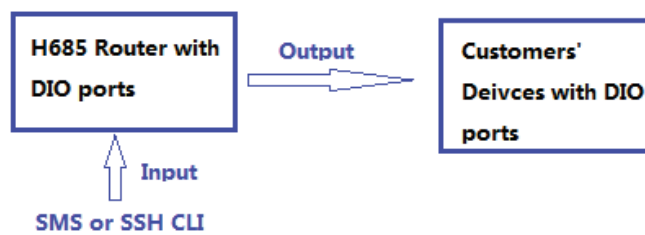


DIO (Digital Input Output) example



DIO Output Application 1



DIO Output Application 2

Notes)

1. This user manual is for DIO output test example. For input feature, need customization with detailed requirements.
2. The DIO Control Device is a device from E-Lins. Customers can order this DIO Control Device. This DIO Control Device is with a Relay on it.
3. If need SMS feedback indication, please check the "SMS ACK";
4. If router does not work, try to check the "Fix error for some networks";
5. The configured phone number should be same as the "SMS log".

Steps)

1. Open web management page, goto Services→SMS.



Status

System

Services

- ICMP Check
- VRRP
- Failover
- SNMP
- DTU
- GPS
- SMS**
- VPN
- DDNS
- Connect Radio Module

Network

Logout

SMS Command SMS Alarm Phone Number SMS

SMS Command

Enable

SMS ACK

Fix error for some network

Reboot Router Command

Get Cell Status Command

Set Cell link-up Command

Set Cell link-down Command

DIO_0 Set Command

DIO_0 Reset Command

DIO_1 Set Command

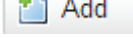
DIO_1 Reset Command

DIO Status Command

2. Check "Enable" in SMS Command page, and then click "Save & Apply" at the bottom of page.



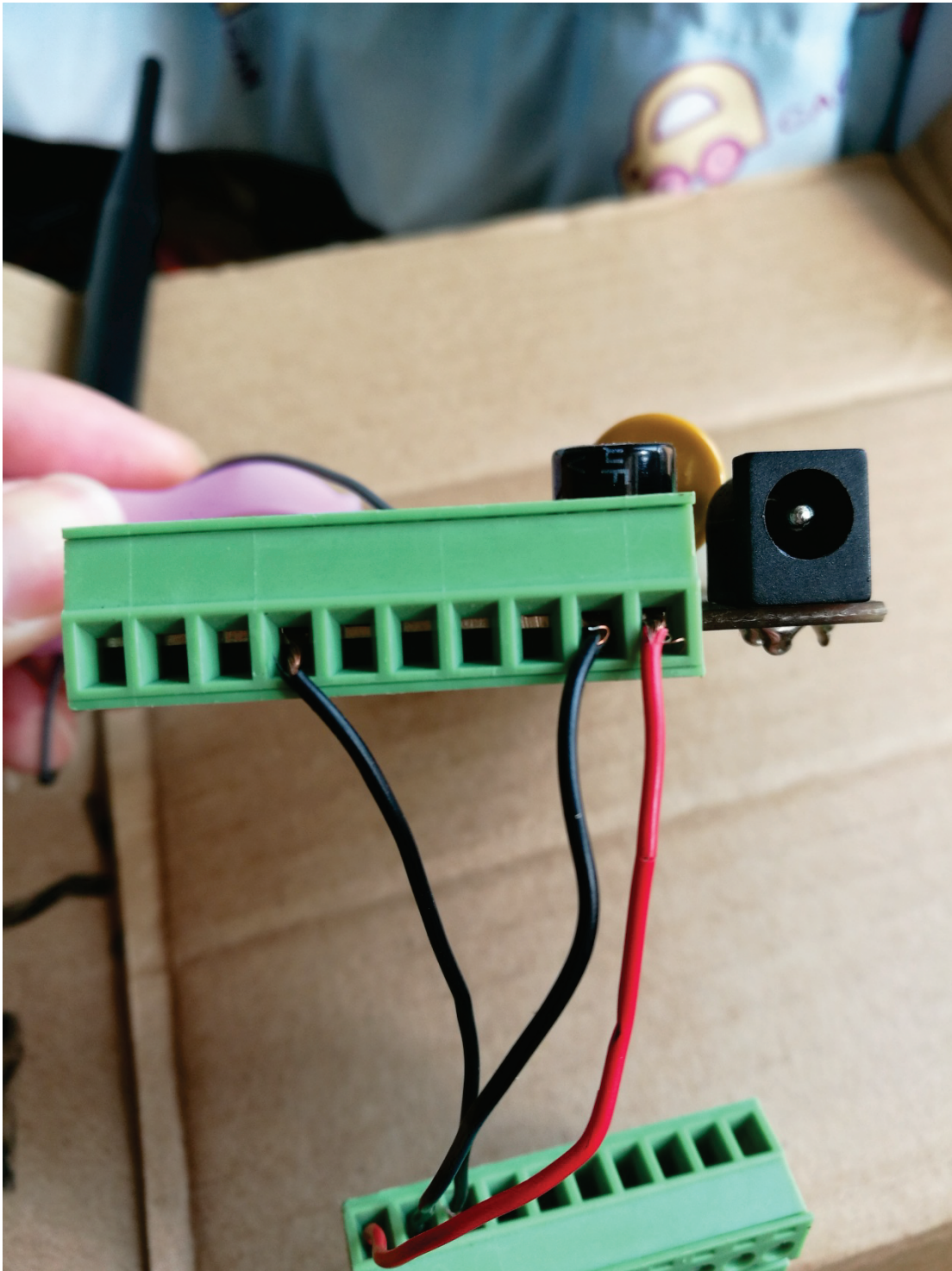
3. Goto tab "Phone Number", input phone number and check "SMS Command", then click button "Save & Apply". SMS command from this number will be accepted.

4. If more than one phone number needed to control DIO, input "New group name" and click button , then configure it as step 3.

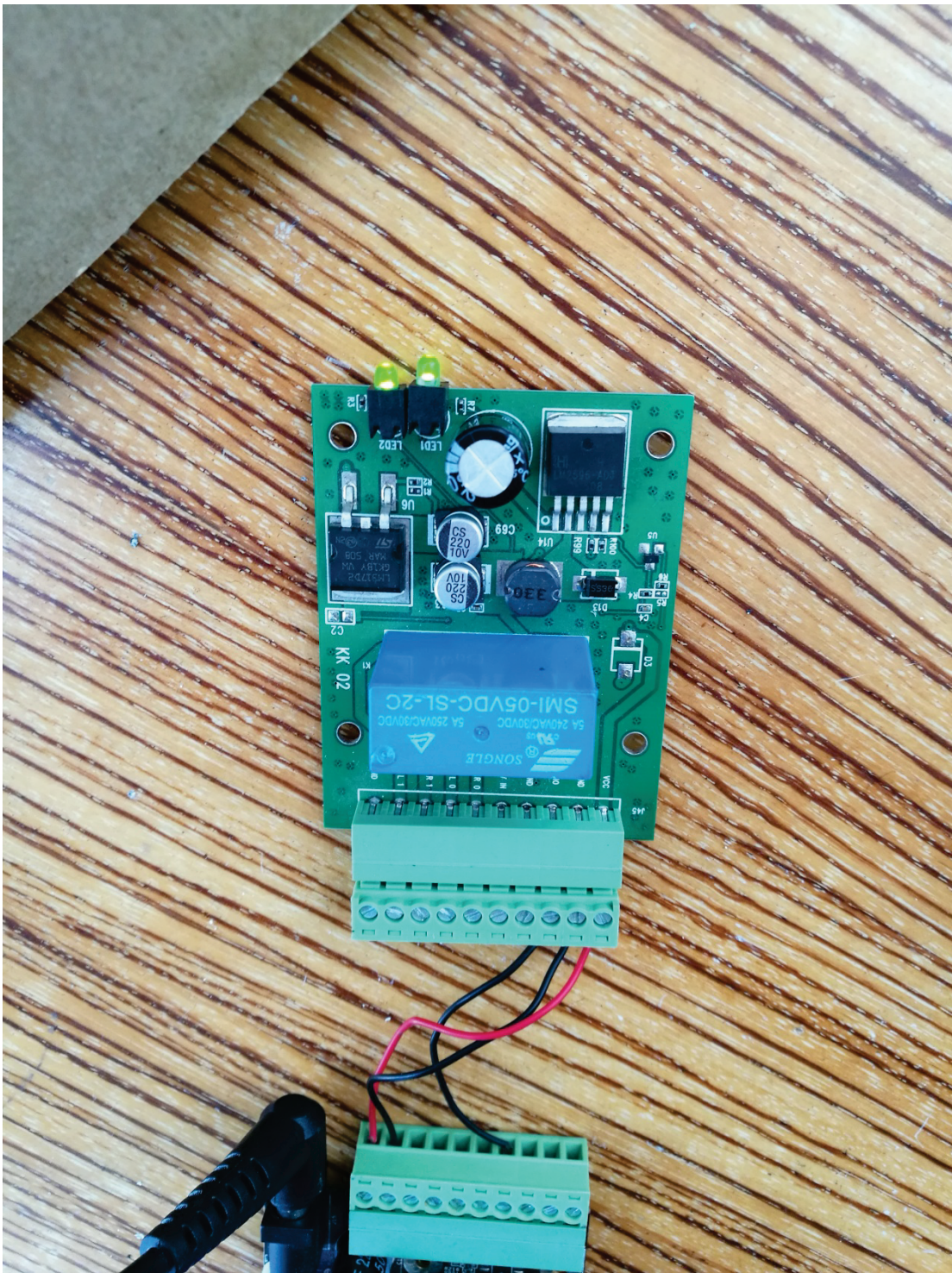


The pin nearby DC power is pin1. And the far side is pin10. Pin1 is power VDD, Pin2 is power GND, pin7 is DIO0, pin8 is DIO1.

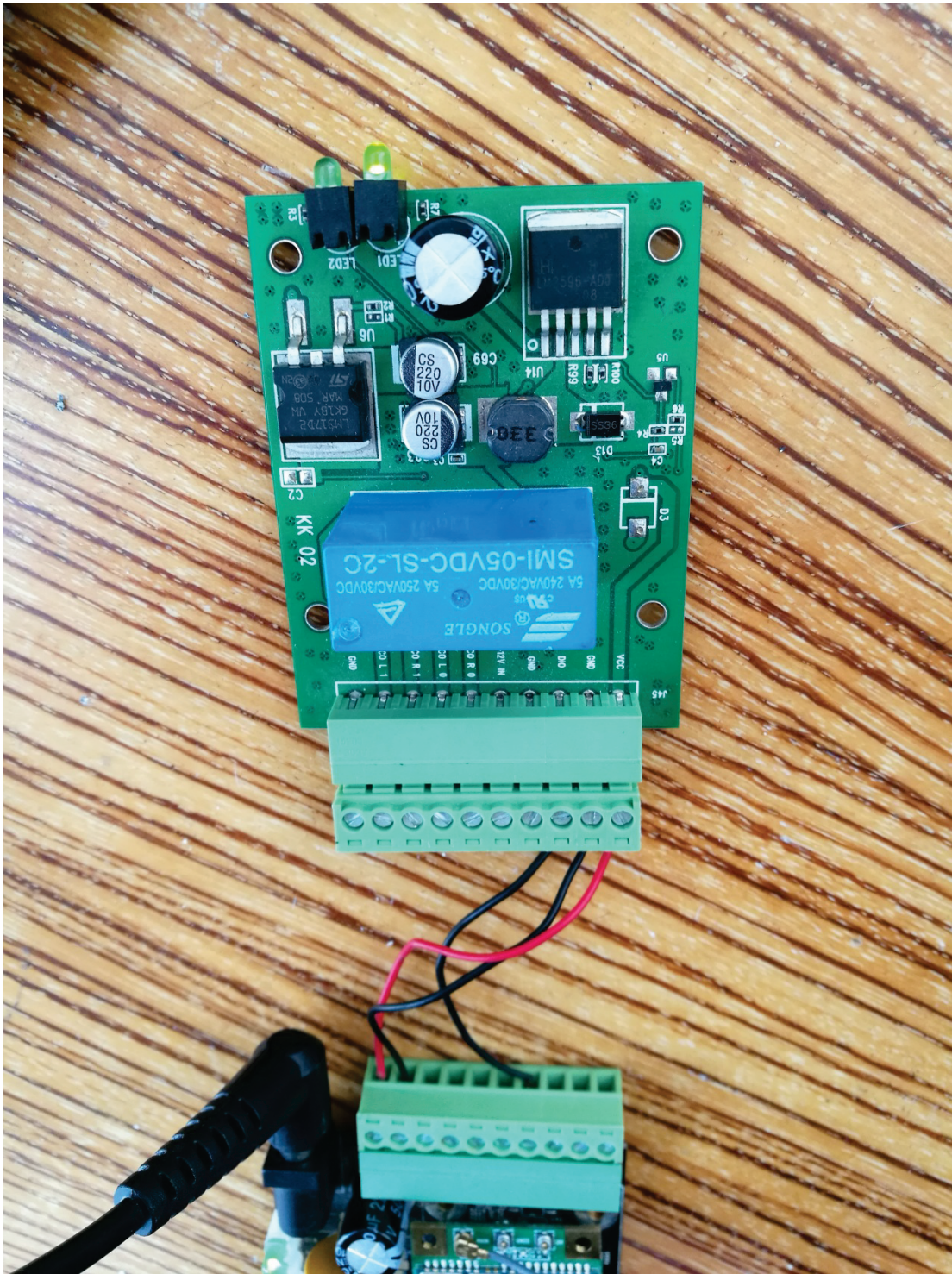
5. Connect *terminal block* to router, pin1, pin2, and pin7 connected.



6. Send short message "dio01" to the number of SIM which is inserted in router to set DIO0 up. Waiting for couple of seconds, the light of DIO Control Device turn on.



7. Send short message "dio00" to the number of SIM which is inserted in router to set DIO0 down. Waiting for couple of seconds, the light of DIO Control Device turn off.



8. Goto SMS tab to check short message log.



Status	SMS Command SMS Alarm Phone Number SMS
System	
Services	
ICMP Check	
VRRP	
Failover	
SNMP	
DTU	
GPS	
SMS	
VPN	
DDNS	
Connect Radio Module	
Network	

Send SMS

Receiver Phone Number

Message

SMS Log

Received SMS: sender: [REDACTED]; time: 17-03-20 10:16:44; msg: dio01
Received SMS: sender: [REDACTED]; time: 17-03-20 10:18:44; msg: dio00

9. Short message on cellphone

