

E-Lins Technology Co.,Ltd



M2M / IoT Mobile Cellular Router & Modem (Industrial Class)

Honesty

Devotion

Innovation



E-Lins Technology Co.,Ltd



Factory Inside & Factory Office Corner

E-Lins Industrial Wireless Router & Modem for M2M / IoT

Model	Type	SIM Slot	4G LTE	3G	2G	Ethernet RJ45	USB	TF	WiFi	High Gain WiFi	Serial	GPS	DI/DO	POE	DC5-60V	Others
H685	Router	1	Y	Y	Y	2			802.11b/g/n		Y	O	Y	Y	O	Cute Size
H820	Router	1	Y	Y	Y	5			802.11b/g/n		Y	O			O	
H820Q	Router	1	Y	Y	Y	5			802.11b/g/n 802.11b/g/n/AC	O	Y	O			O	
H820QO	Router	2	Y	Y	Y	2			802.11b/g/n 802.11b/g/n/AC	O	Y	O		Y	O	IP67 Outdoor
H750	Router	2	Y	Y	Y	3		Y	802.11b/g/n		Y	O	Y	Y	O	
H700	Router	2	Y	Y	Y	5	Y	Y	802.11b/g/n/AC		Y	O	Y		O	Gigabit Ethernet
M300	Modem	1	Y	Y	Y		Y					O			O	
M400	Modem	1	Y	Y	Y		Y				Y					

Y = supported

O = option

Default power input is DC-5-40V wide range

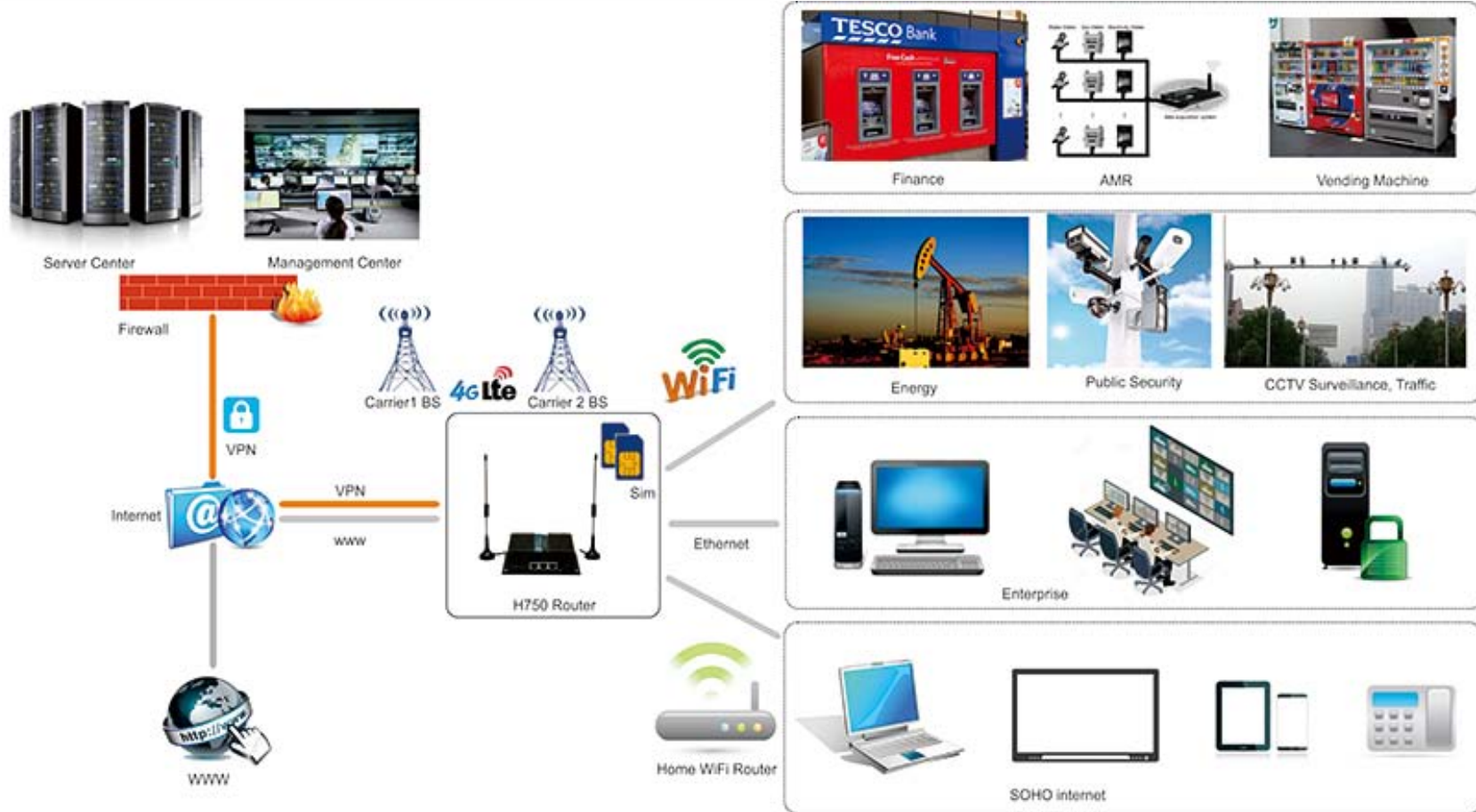
TF = MicroSD card

Serial: RS232 or RS485

Application Field for Wireless M2M and IoT:

- Water, gas and oil flow metering
- Data Monitor and Control
- CCTV, DVR monitor application
- AMR (automatic meter reading)
- Power station monitoring and control
- Remote POS (point of sale) terminals
- ATM machines
- Traffic signals monitor and control
- Fleet management
- Power distribution network supervision
- Central heating system supervision
- Weather station data transmission
- Hydrologic data acquisition
- Vending machine
- Traffic info guidance
- Parking meter and Taxi Monitor
- Telecom equipment supervision (Mobile base station, microwave or optical relay station)
- Other applications

Typical Application Diagram



Failover & Bandwidth Bonding (Load Balance) Tech. for M2M / IoT



Routers and Modems for M2M / IoT



E-Lins Industrial Wireless Router & Modem for M2M / IoT																	
Model	SIM Slot	4G LTE	3G	2G	Ethernet RJ45	USB	TF	802.11n WiFi	802.11AC Dual Band WiFi	High Gain WiFi	Serial Option	GPS	DI DO	POE	DC 5-60V	Others	Main Features
H685	1	Y	Y	Y	2			Y			1	0	Y	Y	0	Cute Size	VPN (IPsec, PPTP, L2TP, GRE, OpenVPN), DDNS, DNS, DHCP, Static Route, Dynamic Route, Firewall, NAT/NAPT, guest WiFi, NTP, QoS, VRRP, Static Route, Dynamic Route, IPv6 ;
H820	1	Y	Y	Y	5			Y			1	0			0		Firmware update locally, remotely (LAN, WiFi and OTA WAN) and RMS (Remote Management System) option
H820Q	1	Y	Y	Y	5			Y	0	0	1	0			0		Auto-dial, always online, schedule dial, watch-dog; Web GUI/Telnet/SSH/CLVSNMP/TR069/NMS management;
H820QO	2	Y	Y	Y	2			Y	0	0	1	0		Y	0	IP67 Outdoor	Monitor and Alarm, SMS Dual Power Input, over-current and over-voltage protection;
H750	2	Y	Y	Y	3		Y	Y			1	0	Y	Y	0		Desktop, Wall-mount and Din-rail mount of installation;
H700	2	Y	Y	Y	5	Y	Y	Y	Y		2	0	Y		0	Gigabit Ethernet, USB3.0	External antennas, MIMO supported; Cellular/WAN RJ45/WiFi Client link failover and load balance;

Y = supported
 O = option
 Default power input is DC-5-40V wide range
 TF = MicroSD card



Main

Industrial class, single sim single radio module, one sim card slot; VPN(PPTP, L2TP, IPsec, GRE, OpenVPN, DMVPN, etc.), SNMP; DDNS, DHCP, NAT/NAPT, Web, Auto-dial, always online, watch-dog, POE; Cellular/WAN RJ45/WiFi Client supports failover;

Ports: RJ45 LAN * 1 + RJ45 WAN * 1 (WAN can be used as LAN to get two RJ45 LAN)

Option: DI/DO digital Input and Output port, WiFi, RS232/RS485, GPS, DC input 5V~60V (default is DC5V-40V)

Datasheet

Link1: <http://www.e-lins.com/EN/download/H685-Datasheet-Eng.pdf>



Main

Industrial class, single sim single radio module, one sim card slot; VPN(PPTP, L2TP, IPsec, GRE, OpenVPN, DMVPN, etc.), SNMP; DDNS, DHCP, NAT/NAPT, Web, Auto-dial, always online, watch-dog; Cellular/WAN RJ45/WiFi Client supports cold failover;

Ports: RJ45 LAN * 4 + RJ45 WAN * 1

Option: WiFi, RS232/RS485, GPS, DC input 5V~60V (default is DC5V-40V)

Datasheet

Link1: <http://www.e-lins.com/EN/download/H820-Datasheet-Eng.pdf>



Main

Industrial class, single sim single radio module, one sim card slot; VPN(PPTP, L2TP, IPsec, GRE, OpenVPN, DMVPN, etc.), SNMP; DDNS, DHCP, NAT/NAPT, Web, Auto-dial, always online, watch-dog; Cellular/WAN RJ45/WiFi Client supports cold failover;

Ports: RJ45 LAN * 4 + RJ45 WAN * 1

Option: Dual Band 802.11AC WiFi, RS232/RS485, GPS, DC input 5V~60V (default is DC5V-40V)

Datasheet

Link1: <http://www.e-lins.com/EN/download/H820Q-Datasheet-Eng.pdf>

Main

Industrial class, single sim single radio module, two sim card slots;
IP67 level water-proof and dust-proof;
VPN(PPTP, L2TP, IPsec, GRE, OpenVPN, DMVPN, etc.), SNMP; DDNS, DHCP, NAT/NAPT, Web,
Auto-dial, always online, watch-dog; Cellular/WAN RJ45/WiFi Client supports cold failover;

Ports: RJ45 LAN * 1 + RJ45 WAN * 1 (WAN can be used as LAN to get two RJ45 LAN)

Option: Dual Band 802.11AC WiFi, GPS, DC input 5V~60V (default is DC5V-40V)

Datasheet

Link1: <http://www.e-lins.com/EN/download/H820QO-Datasheet-Eng.pdf>



Main

Industrial class, dual sim single radio module, two sim card slots. Two sim for failover redundancy (backup use), load balance; VPN(PPTP, L2TP, IPSec, GRE, OpenVPN, DMVPN, etc.), SNMP; DDNS, DHCP, NAT/NAPT, Web, Auto-dial, always online, watch-dog; Cellular/WAN RJ45/WiFi Client supports cold failover;

Ports: RJ45 LAN * 4 + RJ45 WAN * 1 Gigabit Ethernet

Option: DI/DO digital Input and Output port, 802.11AC Dual Band WiFi, RS232/RS485, GPS, DC input 5V~60V (default is DC5V-40V)

Datasheet

Link1: <http://www.e-lins.com/EN/download/H700-Datasheet-Eng.pdf>



Main

Industrial class, dual sim single radio module, two sim card slots. Two sim for failover redundancy (backup use), load balance; VPN(PPTP, L2TP, IPsec, GRE, OpenVPN, DMVPN, etc.), SNMP; DDNS, DHCP, NAT/NAPT, Web, Auto-dial, always online, watch-dog; POE, Cellular/WAN RJ45/WiFi Client supports cold failover;

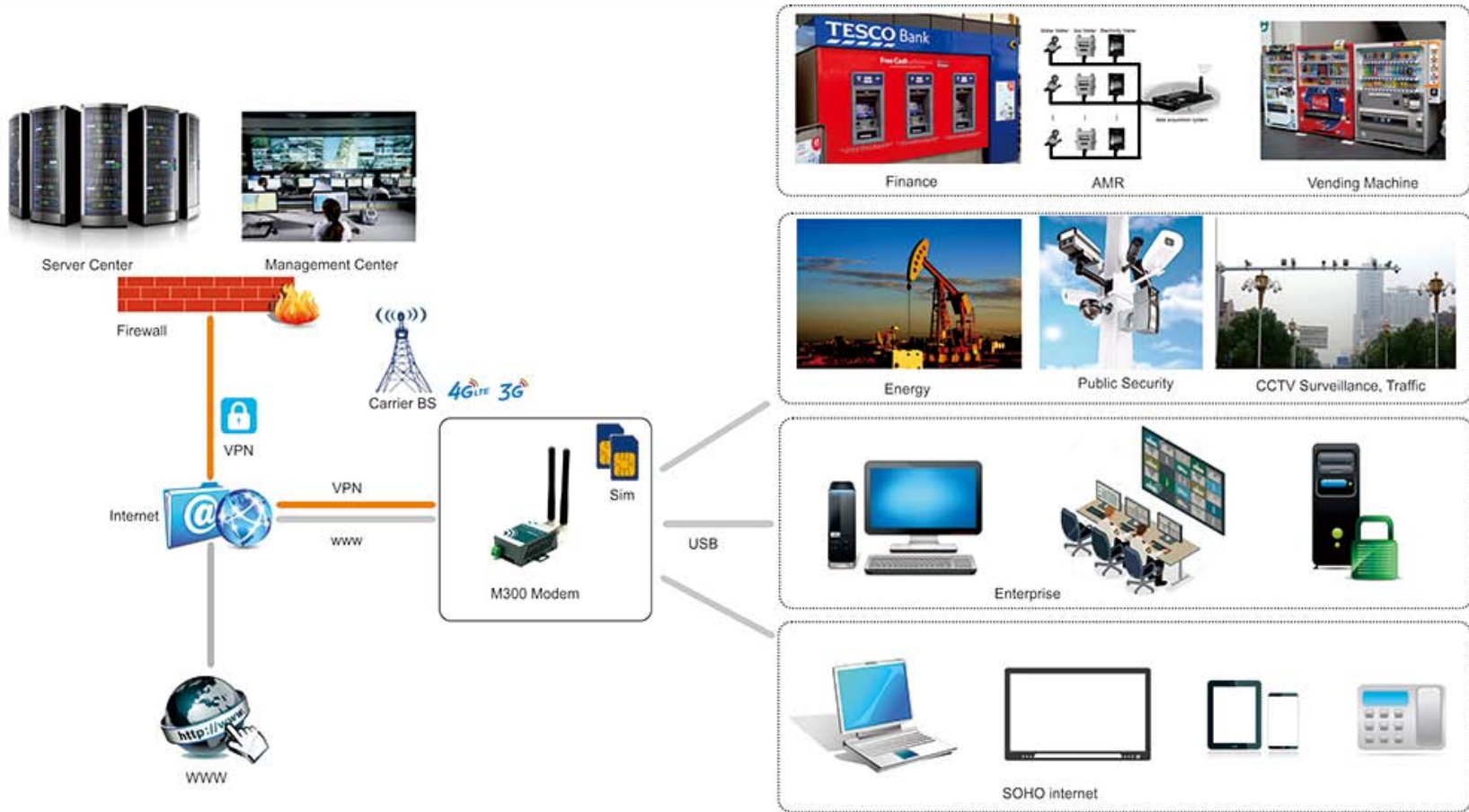
Ports: RJ45 LAN * 2 + RJ45 WAN * 1

Option: DI/DO digital Input and Output port, WiFi, RS232/RS485, GPS, DC input 5V~60V (default is DC5V-40V)

Datasheet

Link1: <http://www.e-lins.com/EN/download/H750-Datasheet-Eng.pdf>

Typical Application Diagram





Type

Industrial class, single sim single radio module, one sim card slot. USB port.

Datasheet

Link1: <http://www.e-lins.com/EN/download/M300-Datasheet-Eng.pdf>



Type

Industrial class, single sim single radio module, one sim card slot. Serial port, or serial + USB port

Datasheet

Link1: <http://www.e-lins.com/EN/download/M400-Datasheet-Eng.pdf>

Difference between DTU Modem & Normal Modem



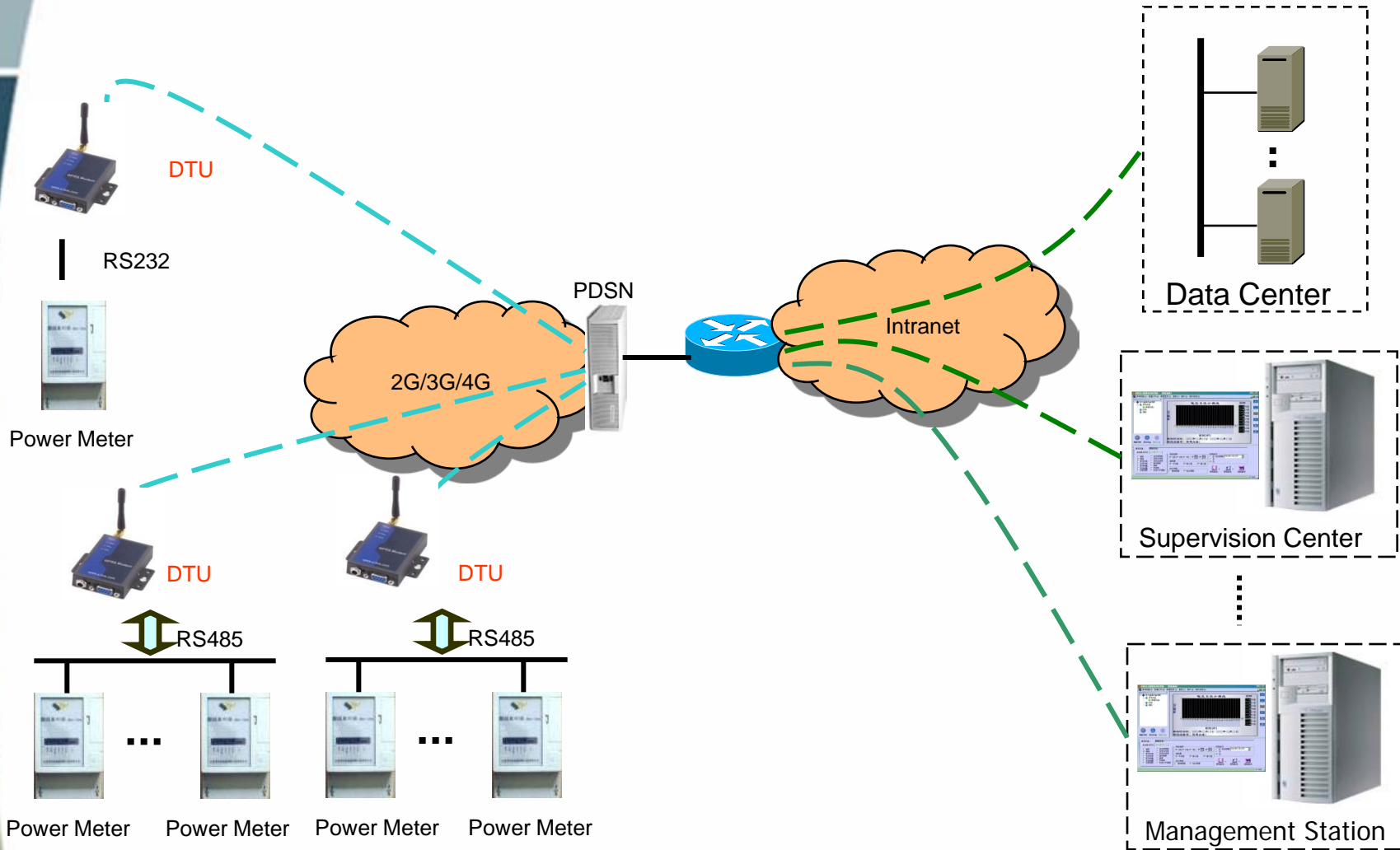
Item	DTU Modem (Serial to Cellular Gateway)	Normal Modem
Dial up	Support automatically dialup; Online always; trigger to dialup, schedule to dialup	Need back platform to dialup
TCP/IP, PPP	Yes	Yes
Interface	RS232/RS485	RS-232
Bandwidth	20~40Kbit/s	20~40Kbit/s
Coverage	Same as GSM network	Same as GSM network
Transparent Data	Yes	No
VDPN	Yes	Yes
Point to Point	Yes	Depends network
Point to Multipoint	Yes	No
Center to Multipoint	Yes	No
Dynamite IP Address Mapping	Yes	No
Multi-protocol	Yes	No
Applications	Utilities, traffic control, finance and industry supervision	Mobile Internet access for PC

DTU (Serial to Cellular Gateway)

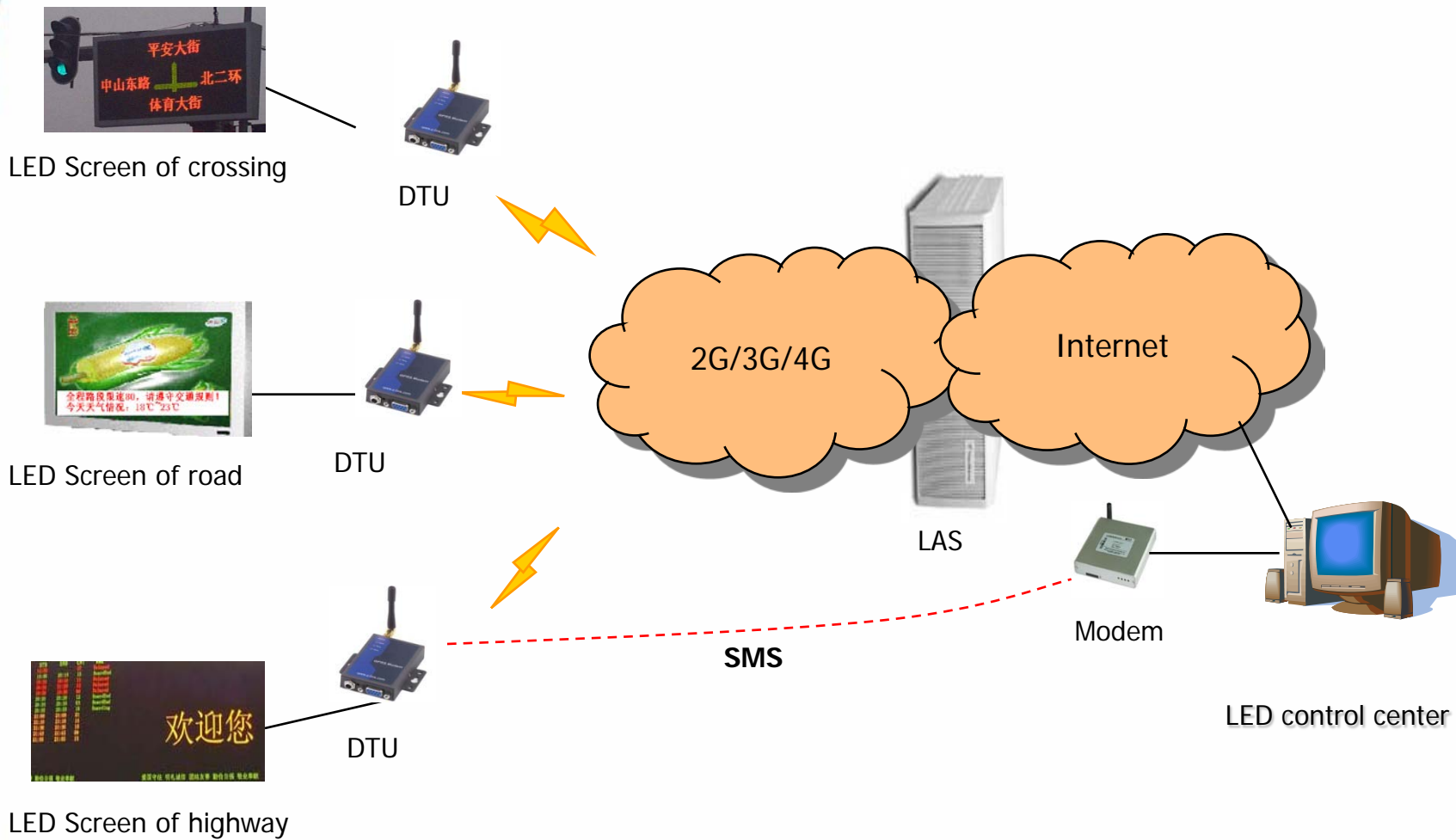


Series and Models	Supported Ports	Supported Networks	Configure Method
H685 with DTU	RJ45 + RS232 / RS485 / TTL	2G / 3G / 4G LTE	GUI Web / Telnet / SSH Remote Management System
H820 with DTU	RJ45 + RS232 / RS485 / TTL	2G / 3G / 4G LTE	GUI Web / Telnet / SSH Remote Management System
H820Q with DTU	RJ45 + RS232 / RS485 / TTL	2G / 3G / 4G LTE	GUI Web / Telnet / SSH Remote Management System
H700 with DTU	RJ45 + RS232 / RS485 / TTL	2G / 3G / 4G LTE	GUI Web / Telnet / SSH Remote Management System
H750 with DTU	RJ45 + RS232 / RS485 / TTL	2G / 3G / 4G LTE	GUI Web / Telnet / SSH Remote Management System

DTU Application



DTU Application



DTU Application-Light Supervision Solution

