

H820td 3G TD-SCDMA Router Datasheet



>>| Product Introduction

The H820td 3G TD-SCDMA Cellular Router designed for establish a 2G/3G TD-SCDMA cellular and Wi-Fi wireless network and share a cellular broad band Internet connection. The H820 series Cellular Router enables users to quickly create a secure Wi-Fi (802.11 b/g/n) network and provide access to the Internet using a cellular network. By connect to cellular mobile network; an Internet connection can be accessed and shared virtually anywhere within a wireless broadband network.

E-Lins' mobile data products are widely used in more than twenty industrial fields, such as power control, water schedule, traffic, oil field, weather forecast, environmental protection, street lamp control, post, bank and many other areas.

>>| Typical Topology

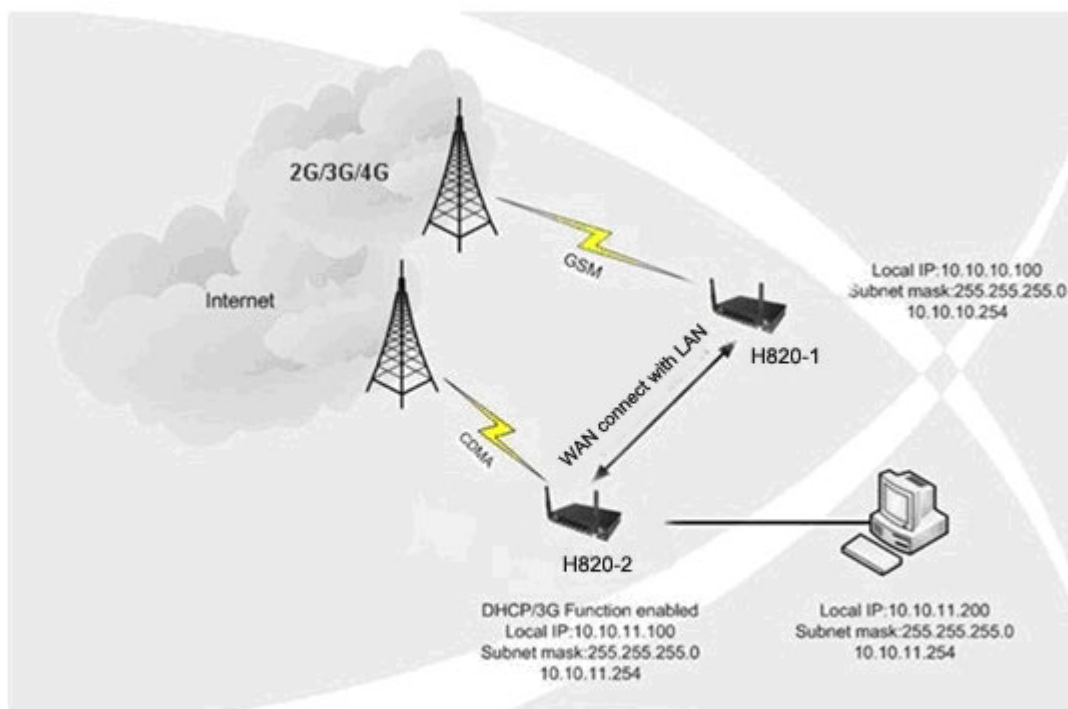


Single H820 Typical Application Diagram

E-Lins Technology Co., Limited

Add: #901-902, Unit B, Jiayun Bld., Huada Rd., Dalang, Longhua, Shenzhen, 518000, China

Tel: +86-755-29230581 83700465 E-mail: sales@szelins.com www.szelins.com www.e-lins.com



Dual H820 Typical Application Diagram

Dual H820 Application Combination type	
H820-1	H820-2
Network A	Network B
Network A	Network A
<p>It means H820-1 and H820-2 can be same network, also can be different network. Network A can be any one of GSM/GPRS/EDGE/UMTS/HSDPA/HSUPA/HSPA/HSPA+/4G LTE/CDMA1x/EVDO; Network B can be any one of GSM/GPRS/EDGE/UMTS/HSDPA/HSUPA/HSPA/HSPA+/4G LTE/CDMA1x/EVDO; Please specify with us which network you will use before order.</p>	

>>| Industrial Application

- Remote Data Monitor and Control
- CCTV, security surveillance
- Water, gas and oil flow metering and schedule
- AMR (automatic meter reading)
- Power station monitoring and control
- Remote POS (point of sale) terminals, ATM,

- Traffic signals monitor and control, Traffic info guidance
- Oil field, weather forecast, environmental protection, street lamp monitoring and control
- Early Warning of Mountain Torrent
- Fleet management
- Power distribution network supervision
- Central heating system supervision
- Weather station data transmission
- Hydrologic data acquisition
- Vending machine
- Telemetry, SCADA
- Vehicle logistics and diagnostics controlling
- Parking meter and Taxi Monitor
- Telecom equipment supervision (Mobile base station, microwave or optical relay station)

>>| Specification

Wireless	
Compatible Mobile Networks	TD-SCDMA Back compatible to 2G GSM EDGE/GPRS
Cellular Frequency	3G TD-SCDMA: 2010~2025MHz/1880~1920Mhz Quad-band EGSM 850/900/1800/1900Mhz;
Bandwidth	3G TD-SCDMA: 2.8Mbps EDGE: Downlink 384 kbps, Uplink 118 kbps; GPRS: Downlink 108 kbps, Uplink 42.8 kbps; Notes: the bandwidth is peak value. Real value depends on carrier network support.
Network and Band Lock Feature (Option)	Default is unlocked, can use this feature to lock
Main Features and Performance	
USB Host	No
SMS/Voice	SMS/Voice call to control router to be online, offline, reboot and status monitor; SMS is default feature, Voice is option

GPS (Option)	GPS feature
DTU (Option)	With DTU feature (Serial to Cellular Gateway feature, RS232 or RS485 port option). Details: Serial Baudrate: 300bps, 600bps, 1200bps, 2400bps, 4800bps, 9600bps, 19200bps, 38400bps, 57600bps, 115200bps; Serial Parity: none, even, odd; Serial Databits: 7, 8; Serial stopbits: 1, 2; Serial flow control: none, hardware, software; Mode: Server (up to 4 server centre, can OEM to be more), Client; Protocol: TCP, UDP ; Heart Beat : Yes;
VPN	PPTP, L2TP, IPSec, GRE, Tunnel (PPTP server, PPTP client, L2TP client, IPSec client, IPsec server)
OpenWRT (Option)	Optional
VRRP (Option)	Optional
Route	Static Route; Optional for Dynamic Route (BGP, BGPD, OSPF, Zebra, Rip);
SNMP	Support V1, V2. V3
VLAN	Support multi-LAN IP address, support two IP address
Wi-Fi	Optional, 802.11b/g/n; 150Mbps default. 300Mbps optional. Can be used as AP and client; Frequency from 2.4GHz to 2.483GHz, Access Points, Routers and Gateway Server Applications, wireless up to 254 PC users
Fail Over Redundancy (network Backup feature)	Auto-dial feature, keep alive link; LCP, ICMP check; Built-in watch dog; Cellular (2G/3G/4G), RJ45 WAN (xDSL, DHCP, Fixed IP), WiFi client three line redundancy; Two H820 dual sim same network(Network1+ Network1); Two H820 dual sim two network (Network2+ Network 2); Two H820 dual sim dual mode network (WCDMA+CDMA2000, WCDMA+LTE, CDMA2000+LTE); Cold Backup is default, Hot Backup is option; Cold Backup=WAN RJ45 and Cellular WAN not online at the same time. One line online and the other line standby, switch freely with

	triggers; Hot Backup=WAN RJ45 and Cellular WAN are online at the same time. Data goes the main line, and switch to the other line. Hot Backup switch time is shorter than Cold Backup.
POE	No, can be ODM
Firmware update	support firmware update locally or remotely (LAN, WiFi and OTA WAN)
Syslog	local and remote
DDNS	Yes
DHCP Server	Yes
Others	DNS proxy; Optimized EMC design; Real-time clock (NTP, support update with defined hours); WAN/LAN/Memory statistics; Local/remote profiles backup and retrieve;
Management System	Option
Protocol	
Protocol support	TCP, UDP, SMTP, POP, ICMP, FTP, PPP, PPPoE, DHCP, DDNS, DNS, WPS, DMZ, NAT, xDSL, NTP, QoS, etc.
Security	
Firewall	support 64/128 bits WEP, 802.1x, WPA, and WPA2 support WDS support WPA1/2 – PSK support WPA1/2 – 802.1x support EAP – TLS, TTLS, LEAP, PEAP TKIP, AES encryption support access with user name & password. support access control base WAN/LAN interface support access control base source IP address defense DOS attack, support SYN flooding, IP surfing, ping of Death, fragile, teardrop, land etc. support PAP & CHAP support IP filtering support content filtering support NAT/NAPT/Port forwarding/DMZ

Advanced Firewall Features	Stateful Packet Inspection (SPI) VPN Pass-through
Media Access Control	CSMA/CA with ACK
Certifications	REDIUS Client
Interface	
LAN/WAN	4X 10/100M LAN port (RJ45 interface) 1X 10/100M WAN port (RJ45 interface) (WAN RJ45 can convert into LAN RJ45 to get 2 LAN RJ45); WAN ports support Cell/Static IP/DHCP/PPPoE (on demand, keep alive, schedule, manual)
Antenna	2 antenna for Wi-Fi (detachable, SMA interface * 1, Internal *1) 3 antenna for Cellular and GPS (detachable, 50Ω SMA female interface), Cellular support diversity receiving (MIMO) option
Led	SYS*1 WPS*1 VPN*1 Signal*1 Cell*1 WAN*1 LAN (10/100M) 1, 2, 3, 4 WiFi*1
Button	Reset
Console	1 console port
Serial port	RS232 or RS485 DB9 interface
IO Port (option)	2
Management	Easy to use and management; Web/Telnet/SSH/CLI, support remote management SMS; SNMP; RMS (Remote Management System)
At command	Supported
UIM/SIM Card Slot	Support 1.8V/3V UIM/SIM cards, one sim card slot
DC Jack	Two types of input jack for DC

	2.5mm DC jack * 1 Terminal Block * 1
Power	
Power supply	DC5V-50V , typical DC 9V1A or 12V1A, 12v CAR USE; DC5V~40V is the default, DC5V~50V is the option
Current	Idle: about 100mA@12VDC Communication: about 260mA@12VDC
Software	
Device Management	WEB interface (Internet Explorer v6 or Later; Mozilla Firefox v1.5 or Later, or other Java-enabled Browsers, Chome, Opera, Sarafi, etc.)
Minimum System Requirements	Windows, Linux, Mac OS, IOS, Symbian, Android, other OS support web browser; Network Interface Card
Physical	
Operating Temperature	Storage Temperature: -40 ~ 85°C Working Temperature: -30 ~ 75°C
Humidity	95% Maximum (Non-condensing)
Dimensions	PCBA: 156mm x 104mm x 20mm With case: 168mm x 104mm x 25mm
Weight	455g (not including the antenna) 550g (including the antenna) 850g (including all accessories, without package)
Color	Metal Gray-Black, OEM is available
Others	
Warranty	1 Year default. Option extends to 5 years maximum.
Package Contents	H820 Series wireless Router Ethernet Cable Power Adapter Antenna Others depends on option features

>>| H820 model and types

H820 x - - - XXX (option)



W: WiFi WLAN

G: GPS

RS232/RS485: DTU feature (cellular to serial), RS232 or RS485 for choice

50V: DC input 5~50V support, default is 5~40V

t: 4G LTE version. Support FDD LTE or TDD LTE or FDD+TDD LTE, back compatible to 3G and 2G

w: 3G WCDMA HSPA version, support HSUPA/HSDPA/UMTS/EDGE/GPRS/GSM

p: 3G WCDMA HSPA+ version, support HSPA+/HSUPA/HSDPA/UMTS/EDGE/GPRS/GSM

eva: 3G CDMA2000 EVDO version, support EVDO RevA/EVDO Rev0/CDMA1x

evb: 3G CDMA2000 EVDO version, support EVDO RevB/EVDO RevA/EVDO Rev0/CDMA1x

td: 3G TD-SCDMA version, support TD-HSUPA/TD-HSDPA/TD-SCDMA/EDGE/GPRS/GSM

Notes:

1) option feature can be select one or all

2) for LTE version, please confirm your LTE band and Network Carrier with order to avoid wrong selection

Notes: please be informed the following features are option. Please indicate before order.

- 1) Cellular diversity receiving MIMO (with this feature, router can get better signal and speed)
- 2) WiFi Feature
- 3) GPS feature
- 4) Serial to cellular feature, RS232 or RS485 can choose one
- 5) Voice/SMS control
- 6) DC5V~50V(default is DC5V~40V)
- 7) Dynamic Route.

>>| Package & Accessories

- The H820 Series wireless Router

E-Lins Technology Co., Limited

Add: #901-902, Unit B, Jiayun Bld., Huada Rd., Dalang, Longhua, Shenzhen, 518000, China

Tel: +86-755-29230581 83700465 E-mail: sales@szelins.com www.szelins.com www.e-lins.com

- Ethernet Cable
- Power Adapter
- Antenna
- Others depends on option features



DB15 to DB9 Cable



DB9 serial cable



RJ45 to DB9 Cable



USB Cable



EU Power Supplier



US Power Supplier



AU Power Supplier



Desktop Power Supplier
EU, US, AU, UK for choice



UK Power Supplier



Metal Magnetic-Mount W/ Cable



Rubber antenna



Rubber Magnetic-Mount W/ Cable



CD-Rom with Manual/Data

Notes:

- 1) We packed the units with free accessories; default packed depends on stock and the device's feature requirement. If you need specify the type, please inform us when you order.
- 2) Different places have different band and frequency. Signal quality affects the data speed. The antenna in the packages is free default. It's a world-wide use type. Our free antenna may not get good signal or good speed in your area. Please get the dedicated antenna for your area yourself to get the best signal and data speed.